



DEPARTMENT OF REGULATORY AND ECONOMIC RESOURCES (RER)
 BOARD AND CODE ADMINISTRATION DIVISION
NOTICE OF ACCEPTANCE (NOA)

Gensteel Doors Inc.
4950 Hickmore Street
Ville St. Laurent, Quebec, Canada H4T1K6

SCOPE:

This NOA is being issued under the applicable rules and regulations governing the use of construction materials. The documentation submitted has been reviewed and accepted by Miami-Dade County RER -Product Control Section to be used in Miami Dade County and other areas where allowed by the Authority Having Jurisdiction (AHJ).

This NOA shall not be valid after the expiration date stated below. The Miami-Dade County Product Control Section (In Miami Dade County) and/or the AHJ (in areas other than Miami Dade County) reserve the right to have this product or material tested for quality assurance purposes. If this product or material fails to perform in the accepted manner, the manufacturer will incur the expense of such testing and the AHJ may immediately revoke, modify, or suspend the use of such product or material within their jurisdiction. RER reserves the right to revoke this acceptance, if it is determined by Miami-Dade County Product Control Section that this product or material fails to meet the requirements of the applicable building code.

This product is approved as described herein, and has been designed to comply with the Florida Building Code, including the High Velocity Hurricane Zone.

DESCRIPTION: Series "GenStorm" Glazed Outswing Steel Doors-LMI

APPROVAL DOCUMENT: Drawing No. **AD-09-003**, titled "Genstorm Glazed Outswing Steel Door System - LMI", sheet 1 through 8 of 8, dated 02-05-2009 and last revised on JAN 02, 2018, prepared by MCY Engineering, Inc., signed and sealed by Yiping Wang, P.E., bearing the Miami-Dade County Product Control Revision stamp with the Notice of Acceptance number and expiration date by the Miami-Dade County Product Control Section.

MISSILE IMPACT RATING: Large Missile Impact Resistant

Limitations: 1. See Design Pressures & corresponding Hardware in sheet **6**. Max. Exterior (positive) DP= +65, where water infiltration requirement is needed.

2. Max. glazing DLO (day light opening) = 35" W X 35" H.

3. Lock Options # **1, 3 & 5** in sheet **6**, require total two (2) flush bolts (top/bottom) on the corresponding panel.

LABELING: Each unit shall bear one of the following permanent labels:

Gensteel Doors Inc. 4950 Hickmore Street Ville St. Laurent, Quebec, Canada H4T1K6	Gensteel Doors Inc. 2335 Industrial Park Drive Cornwall, Ontario, Canada K6H7M4	North American Doors Corp. 1471 Military Turnpike Plattsburgh, NY 12901-1911
---	---	--

and series and the statement: "Miami-Dade County Product Control Approved".

RENEWAL of this NOA shall be considered after a renewal application has been filed and there has been no change in the applicable building code negatively affecting the performance of this product.

TERMINATION of this NOA will occur after the expiration date or if there has been a revision or change in the materials, use, and/or manufacture of the product or process. Misuse of this NOA as an endorsement of any product, for sales, advertising or any other purposes shall automatically terminate this NOA. Failure to comply with any section of this NOA shall be cause for termination and removal of NOA.

ADVERTISEMENT: The NOA number preceded by the words Miami-Dade County, Florida, and followed by the expiration date may be displayed in advertising literature. If any portion of the NOA is displayed, then it shall be done in its entirety.

INSPECTION: A copy of this entire NOA shall be provided to the user by the manufacturer or its distributors and shall be available for inspection at the job site at the request of the Building Official.

This NOA **revises NOA #16-0407.11** and consists of this page 1 and evidence pages E-1 & E-2, as well as approval document mentioned above.

The submitted documentation was reviewed by **Ishaq I. Chanda, P.E.**



2/27/18

NOTICE OF ACCEPTANCE: EVIDENCE SUBMITTED

1. Evidence submitted under previous files

A. DRAWINGS

1. Manufacturer's die drawings and sections (submitted under file listed below)
2. Drawing No. **AD-09-003**, titled "Genstorm Glazed Outswing Steel Door System - LMI", sheet 1 through 8 of 8, dated 02-05-2009 and last revised on AUG 03, 2015, prepared by MCY Engineering, Inc., signed and sealed by Yiping Wang, P.E.

B. TESTS (submitted under files **#15-0526.05/#12-0223.33 /# 10-1203.01/#10-0121.02**)

1. Test reports on 1) Uniform Static Air Pressure Test, Loading per FBC, TAS 202-94
2) Water Resistance Test, per FBC, TAS 202-94 (PMK 2005-AT)

Along with marked-up drawings and installation diagram of Genstorm Opaque Double Swinging Doors, prepared by Fenestration Testing Laboratory, Inc., Test Report No. **FTL 6346**, dated 10/14/10, signed and sealed by Jorge A. Causo, P.E.

2. Test reports on 1) Air Infiltration Test, per FBC, TAS 202-94
2) Uniform Static Air Pressure Test, Loading per FBC, TAS 202-94
3) Water Resistance Test, per FBC, TAS 202-94(PMK177T threshold)
4) Large Missile Impact Test per FBC, TAS 201-94
5) Cyclic Wind Pressure Loading per FBC, TAS 203-94
6) Forced Entry Test, per FBC 2411 3.2.1 and TAS 202-94

Along with marked-up drawings and installation diagram of Genstorm Opaque, Glazed and Louvered Single and Double Swinging Doors, prepared by Fenestration Testing Laboratory, Inc., Test Report No. **FTL 5877**, dated 10/13/09 and **FTL 5898**, dated 09/14/09, both signed and sealed by Julio E. Gonzalez, P.E. (transferred from file # **10-0125.01**)

3. Additional Test reports per FBC TAS 201, 202 and 203-94, test report No. **ITS-3058370-DOUBLE**, dated 12/09/04 for Double Outswing Honeycomb Steel Door System, prepared by Intertek Testing Services, signed and sealed by Stephen J. Emerman, P. E. (**#05-0127.11**).

C. CALCULATIONS

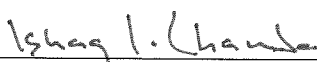
1. Anchor verification calculations and structural analysis, complying with FBC-2014 (**5th Edition**), prepared by MCY Engineering, Inc., dated 05/15/15 and last revised on 08/03/15, signed and sealed by Yiping Wang, P.E. (submitted under files **#15-0526.05**).
2. Glazing complies w/ASTME-1300-98, 04 and -09.

D. QUALITY ASSURANCE

1. Miami Dade Department of Regulatory and Economic Resources (RER).

E. MATERIAL CERTIFICATIONS

1. Tensile test report N0. FTL 6745 per ASTM A370-05 dated 12/01/11, issued by Fenestration Testing Lab, signed and sealed by Martin D. Brinson, P.E. (submitted under file # **10-0125.03**).


Ishaq I. Chanda, P.E.
Product Control Examiner
NOA No. 18-0116.18
Expiration Date: July 14, 2021
Approval Date: March 06, 2018

NOTICE OF ACCEPTANCE: EVIDENCE SUBMITTED

F. STATEMENTS

1. Statement letter of conformance to FBC 2014 (5th Edition), dated 08/03/15, prepared by MCY Engineering, Inc, signed and sealed by Yiping Wang, P.E. (submitted under files #15-0526.05)
2. Statement letter of Lab. Compliance, as a part of above test reports.

G. OTHER

1. This NOA **renews NOA #15-0526.05**, expiring on 07/14/21.
2. Test proposal No. **08-1489**, issued to Gensteel Door Inc, approved on 11/14/08.
3. Distribution agreement between GenSteel Door, Canada & North American Door Corp, N.Y. dated 10/22/10, signed by Bruno Gervasi and Antonio Gervasi, respectively.

2. New Evidence submitted

A. DRAWINGS

1. Drawing No. **AD-09-003**, titled “Genstorm Glazed Outswing Steel Door System - LMI”, sheet 1 through 8 of 8, dated 02-05-2009 and last revised on JAN 02, 2018, prepared by MCY Engineering, Inc., signed and sealed by Yiping Wang, P.E.

B. Test

1. None.

C. CALCULATIONS

1. None.

D. QUALITY ASSURANCE

1. Miami Dade Department of Regulatory and Economic Resources (RER).

E. MATERIAL CERTIFICATIONS

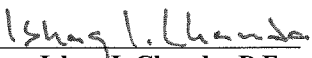
1. Notice of Acceptance No. **13-0909.10** issued to Polymer Extrusion Technology, Inc. dba Glasslam for their “**Glasslam Safety-Plus II Glass Interlayer**”, expiring on 08/07/18.
2. Notice of Acceptance No. **16-1117.01** issued to Kuraray America, Inc. (former E.I. DuPont DeNemours & Co., Inc.) for “**Trosifol: Ultra clear, clear & color PVB glass interlayer**” (former “Kuraray **Butacite** PVB Interlayer)”, expiring on 07/08/19.

F. STATEMENTS

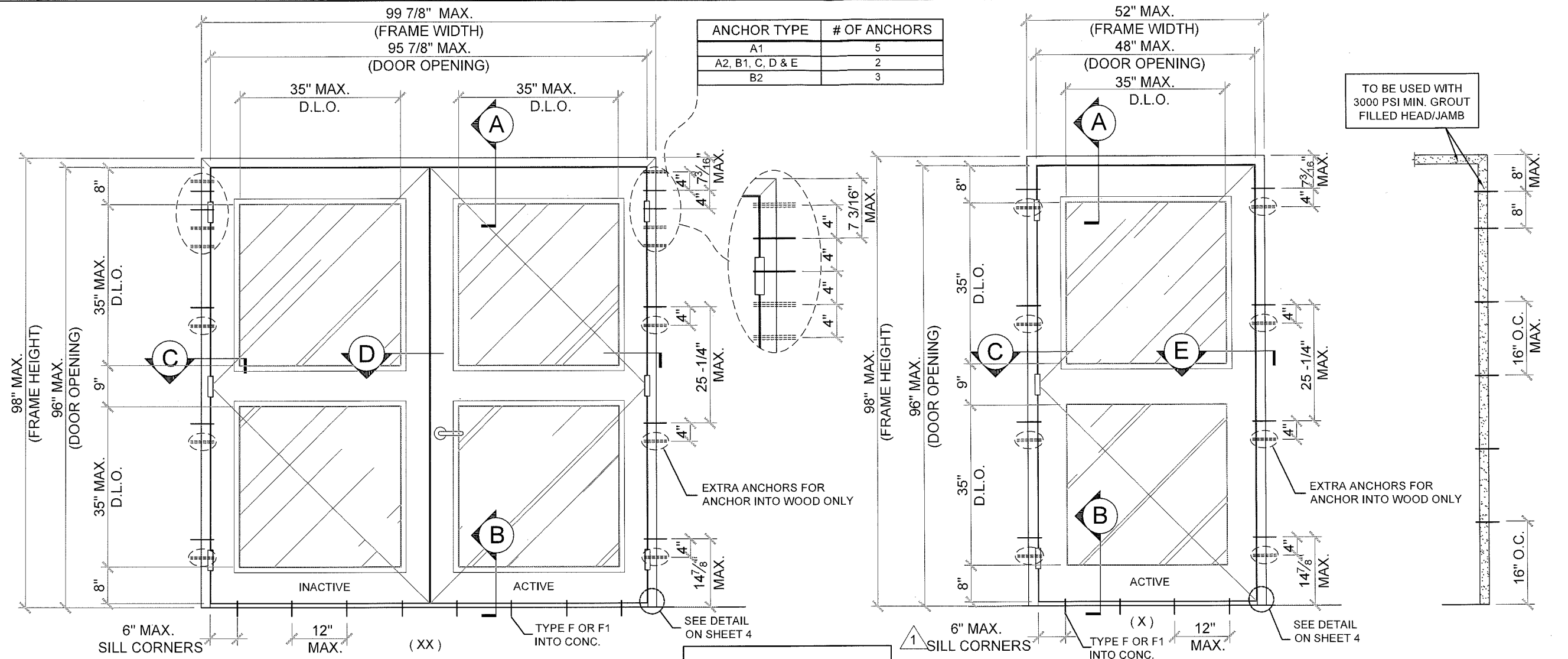
1. Statement letter of conformance to FBC 2017 (6th Edition), dated 01/02/18 , prepared by MCY Engineering, Inc., signed and sealed by Yiping Wang, P.E.
2. E-mail statement letter dated 02/27/18 clarifying DWG changes, issued by MCY Engineering, Inc., signed by Yanet Pablos.

G. OTHER

1. This NOA **revises # 16-0407.11**, expiring 07/14/21



Ishaq I. Chanda, P.E.
Product Control Examiner
NOA No. 18-0116.18
Expiration Date: July 14, 2021
Approval Date: March 06, 2018



DOUBLE DOOR TYP. EXT. ELEVATION

SINGLE DOOR TYP. EXT. ELEVATION

WIRE ANCHOR LAYOUT TYPE G

DESIGN LOAD
SEE DESIGN LOADS
AT SHEET 6 OF 8

SERIES GENSTORM OPAQUE OUTSWING STEEL DOOR (LMI)

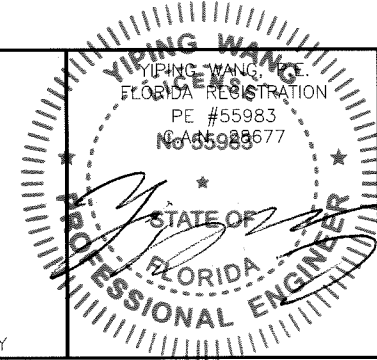
- THIS PRODUCT HAS BEEN DESIGNED AND TESTED TO COMPLY WITH THE REQUIREMENTS OF THE 6TH EDITION FLORIDA BUILDING CODE (2017) INCLUDING HIGH VELOCITY HURRICANE ZONE (HVHZ).
- DOORS RATED FOR LARGE MISSILE IMPACT AND DO NOT REQUIRE SHUTTERS.
- DOORS APPROVED FOR INSTALLATIONS WHERE WATER INFILTRATION RESISTANCE IS OR IS NOT REQUIRED. (SINGLE ROW SELF ADHESIVE CLOSED CELL FOAM TAPE TO BE APPLIED ENTIRE PERIMETER OF FRAME).
- ANCHORS SHALL BE AS LISTED, SPACED AS SHOWN ON DETAILS. ANCHORS EMBEDMENT TO BASE MATERIAL SHALL BE BEYOND WALL DRESSING OR STUCCO.
- ANCHORING OR LOADING CONDITIONS NOT SHOWN IN THESE DETAILS ARE NOT PART OF THIS APPROVAL.
- MATERIALS INCLUDING BUT NOT LIMITED TO STEEL/METAL SCREWS THAT COME INTO CONTACT WITH OTHER DISSIMILAR MATERIALS SHALL MEET THE REQUIREMENTS OF THE 6TH EDITION FLORIDA BUILDING CODE (2017) SECTION AS APPLICABLE.
- METAL STRUCTURES NOT BY GENSTEEL DOOR CO. MUST SUPPORT LOADS IMPOSED BY DOOR SYSTEM AND TRANSFER THEM TO THE BUILDING STRUCTURE.

- 2 X WOOD BUCKS BY OTHERS MUST BE ANCHORED PROPERLY TO TRANSFER LOADS TO THE STRUCTURE.
- A LOAD DURATION FACTOR IN ALLOWABLE STRESS IS USED IN DESIGN OF ANCHORS INTO WOOD ONLY.
- DOOR PANEL: MIN. 20 GA. (0.039") STEEL MIN. Fy = 42 KSI MIN., Fu = 53 KSI MIN. DOOR FRAME: MIN. 18 GA. (0.048") STEEL MIN. Fy = 42 KSI MIN., Fu = 53 KSI MIN.
- DOOR PANEL STAINLESS OPTION: 20 GA. (0.039") STAINLESS STEEL DOOR PANEL MEETING MIN. Fy = 42 KSI, Fu=53 KSI MIN. OR BETTER MAY QUALIFY HAVING "MIL-CERTIFICATE" AS A VERIFICATION OF THE AVAILABLE MIN. YIELD STRENGTH.
- DOOR FRAME STAINLESS OPTION: 18 GA. (0.048") STAINLESS STEEL DOOR FRAME MEETING MIN Fy = 42 KSI, Fu=53 KSI MIN. OR BETTER MAY QUALIFY HAVING "MIL-CERTIFICATE" AS A VERIFICATION OF THE AVAILABLE MIN. YIELD STRENGTH.

NOTES:
EGRESS REQUIREMENTS TO BE REVIEWED BY BUILDING OFFICIAL.

PRODUCT REVISED
as complying with the Florida
Building Code
Acceptance No. 18-0116-18
Expiration Date 7/19/21
Shog L. Howard
Senior Dept. Product Control

JAN 02 2018



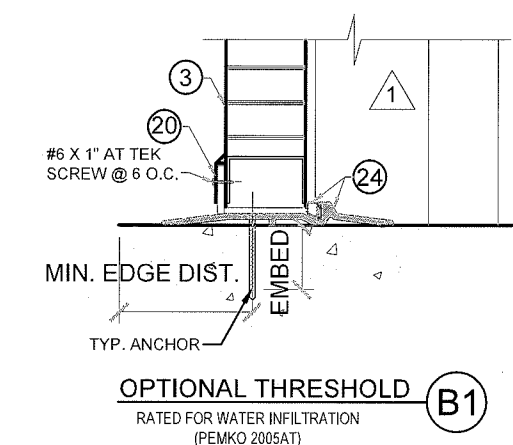
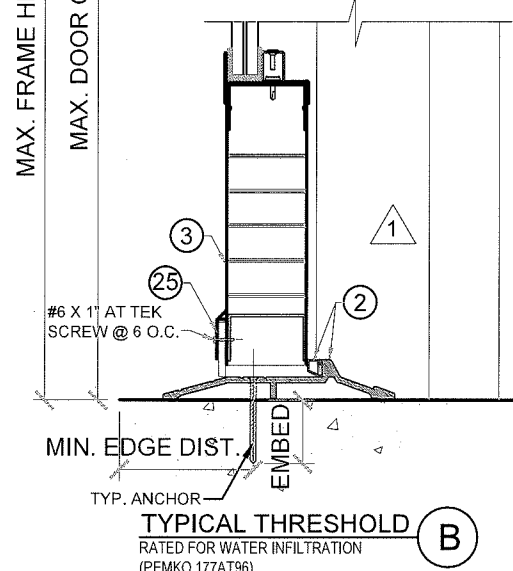
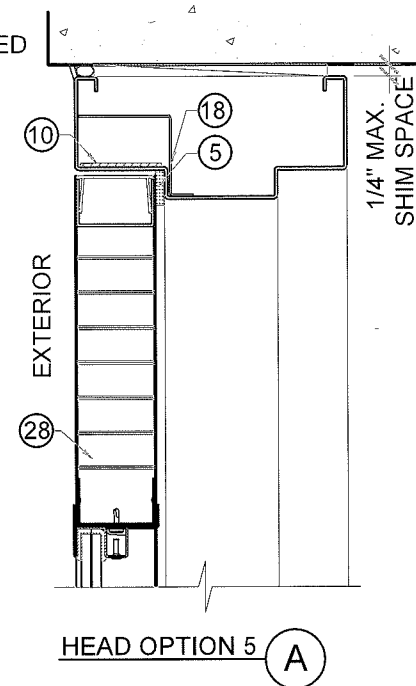
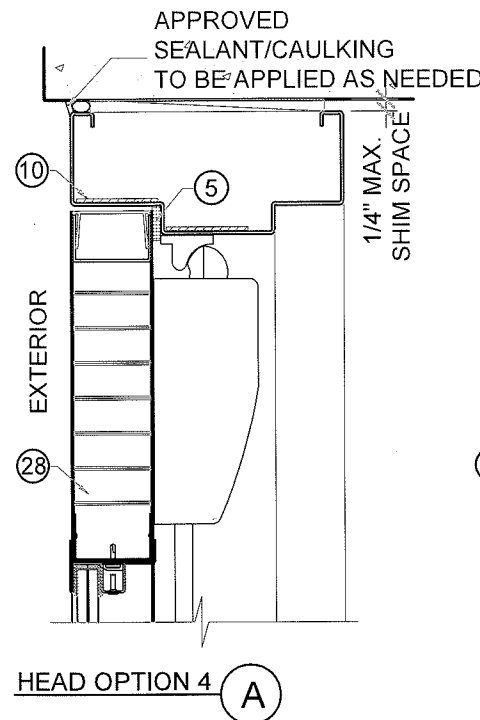
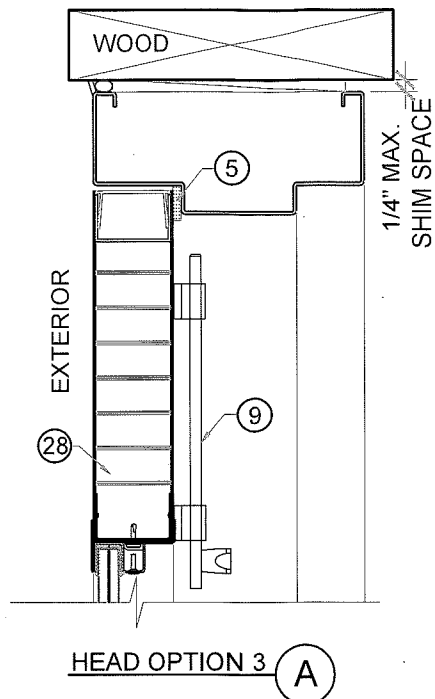
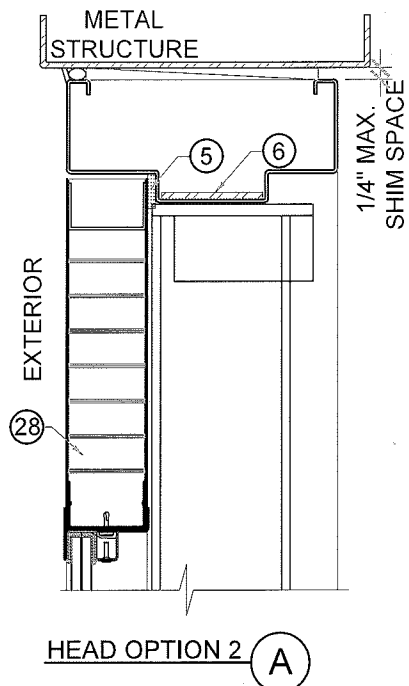
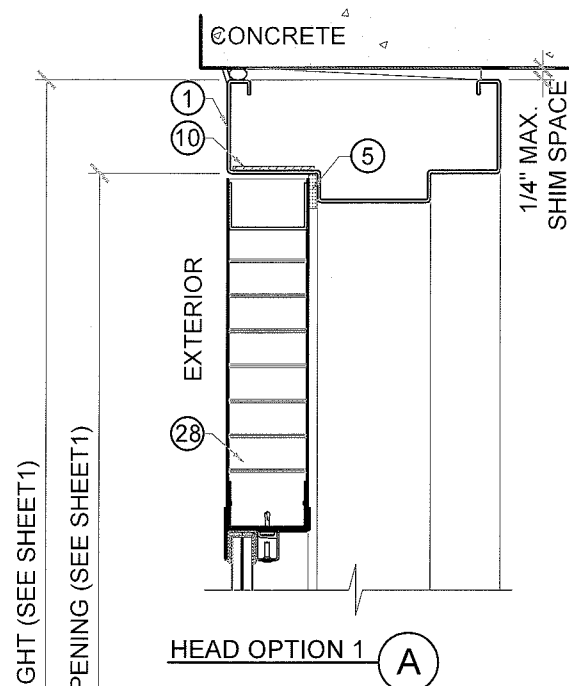
MIAMI DADE COUNTY

NO.	DATE	DESCRIPTION
1	05/24/10	AS PER BCCO COMMENTS
2	07/31/15	UPDATE TO 2014 FBC

MCY
MCY ENGINEERING, INC.
 GLAZING CONSULTANTS
 8501 SW 124 AVE. STE. 205A P: 305.271.0117
 MIAMI, FL. 33183 F: 786.573.5063
 www.MCYUS.com
 MCY.Engineering@Att.net

GENSTORM GLAZED OUTSWING STEEL DOOR (LMI)
gensteeldoors
 4950 Hickmore, St. Laurent, Quebec, Canada H4T 1K6
 Fax: 514.733.1932
 Tel: 514.733.3562
 www.gensteeldoors.com

DATE	02-05-2009
SCALE	NTS.
DRAWN	S.L.
PROJECT	09-015
DRAWING NO.	AD-09-003
SHEET	1 OF 8



HEAD OPTION 2 (A)

HEAD OPTION 3 (A)

HEAD OPTION 4 (A)

HEAD OPTION 5 (A)

TYPICAL ANCHORS W/ EMA (EXISTING MASONRY ANCHOR) @ JAMB:

TYPE A. 5/16" DIA. ULTRACONS BY 'ELCO' Fy=155 KSI Fu = 177 KSI
 (TYPE A1) DIRECTLY INTO 2BY WOOD BUCK
 (TYPE A2) DIRECTLY INTO fc'=3000 PSI CONCRETE
 1-1/2" MIN. EMBED
 2-1/2" MIN. EDGE DISTANCE

TYPE B. 3/8" DIA. HLC SLEEVE ANCHOR BY 'HILTI'
 (TYPE B1) DIRECTLY INTO fc'=3000 PSI CONCRETE, 3" MIN. EDGE DIST.
 (TYPE B2) DIRECTLY INTO fc'=2000 PSI CONCRETE BLOCK, 3-1/2" MIN. EDGE DIST.
 1-1/4" MIN. EMBED

TYPE C. 3/8" DIA. SLEEVE ANCHOR BY 'WEJ-IT'
 DIRECTLY INTO fc'=4000 PSI CONCRETE, 2-3/8" MIN. EMBED
 DIRECTLY INTO fc'=2000 PSI CONCRETE BLOCK, 1-1/4" MIN. EMBED
 2-3/8" MIN. EDGE DISTANCE

TYPE D. 3/8" DIA. POWER BOLT BY 'POWERS'
 DIRECTLY INTO fc'=3000 PSI CONCRETE
 2-1/2" MIN. EMBED
 3" MIN. EDGE DISTANCE

TYPE E. 5/16" DIA. SMS OR MACHINE BOLTS (MIN. GRADE 2 CRS) OR STST INTO METAL STRUCTURES (STEEL OR ALUMINUM 1/8" MIN. THICK.)
 5/8" MIN. EDGE DISTANCE
 STEEL : Fy = 36 KSI MIN.
 ALUMINUM : 6063-T6 MIN.
 (STEEL IN CONTACT WITH ALUMINUM TO BE PLATED OR PAINTED)

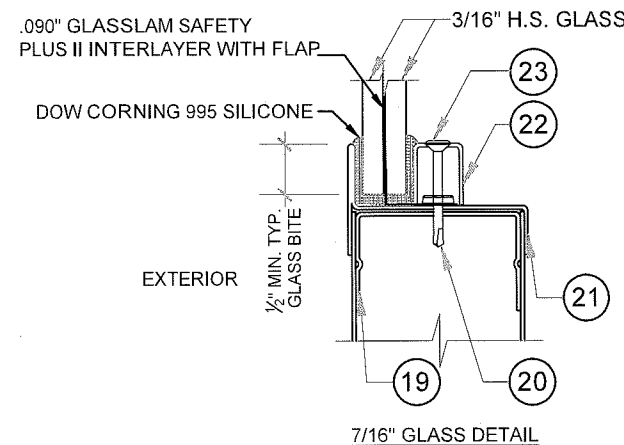
TYPE G. WIRE ANCHOR (Fy=60 KSI) MIN. 10" LONG
 0.173 DIA. STEEL WIRE ANCHORS EMBED INTO CONCRETE BLOCK

SEALANT:
 ALL FRAME JOINTS AND CORNERS TO BE SEALED WITH SILICONE AT PERIMETER

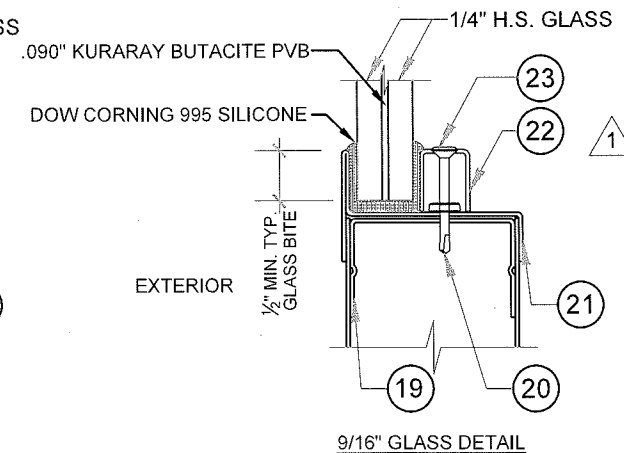
TYPICAL ANCHORS @ THRESHOLD:

TYPE F. 1/4" OR 5/16" DIA. ULTRACONS BY 'ELCO' Fy = 155 KSI Fu = 177 KSI
 DIRECTLY INTO fc'=3000 PSI MIN. CONCRETE
 1-1/2" MIN. EMBED
 2-1/2" MIN. EDGE DISTANCE

TYPE F1. 1/4" TAPCON BY ITW Fy = 90 KSI Fu = 120 KSI
 DIRECTLY INTO fc'=3000 PSI MIN. CONCRETE
 1-1/2" MIN. EMBED
 2-1/2" MIN. EDGE DISTANCE



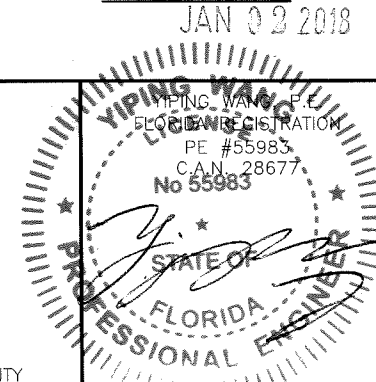
7/16" GLASS DETAIL



9/16" GLASS DETAIL

GLAZING OPTIONS

PRODUCED REVISOR
 as complying with the Florida Building Code
 Acceptance No 18-0116-18
 Expiration Date 7/1/21
 Mr. Ishan J. Chande
 Mr. or Product Control



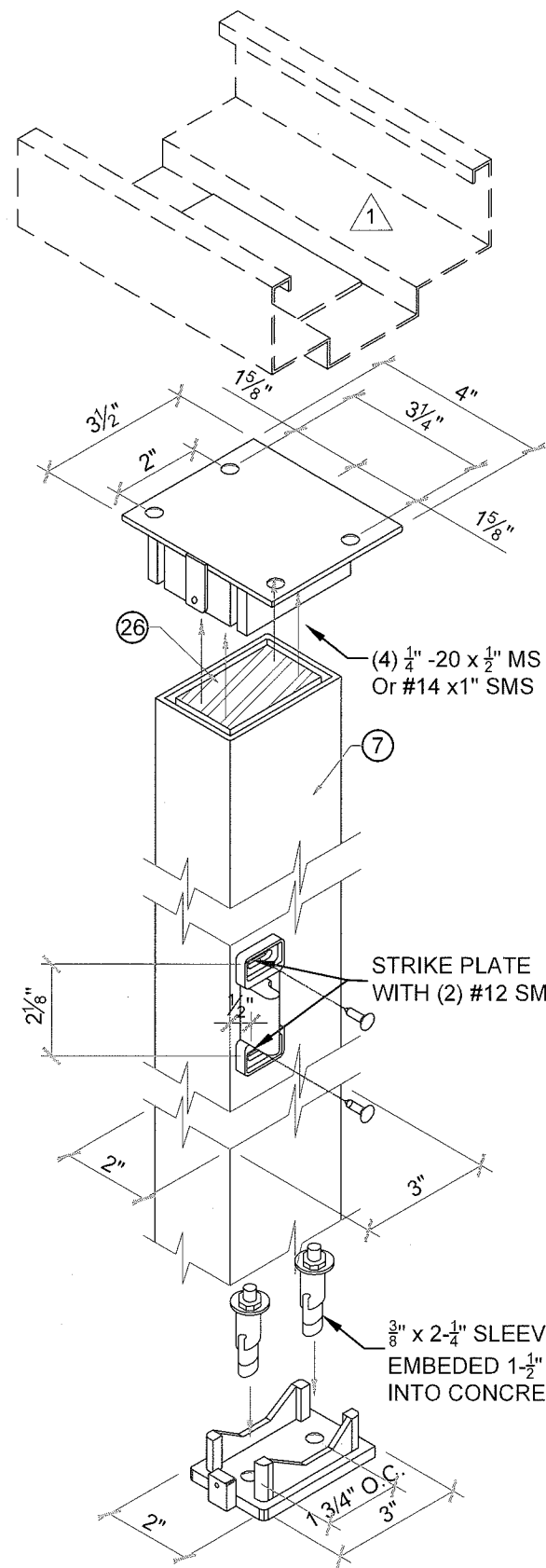
MIAMI DADE COUNTY

NO	DATE	DESCRIPTION
1	05/24/10	AS PER BCCO COMMENTS
2	07/31/15	UPDATE TO 2014 FBC

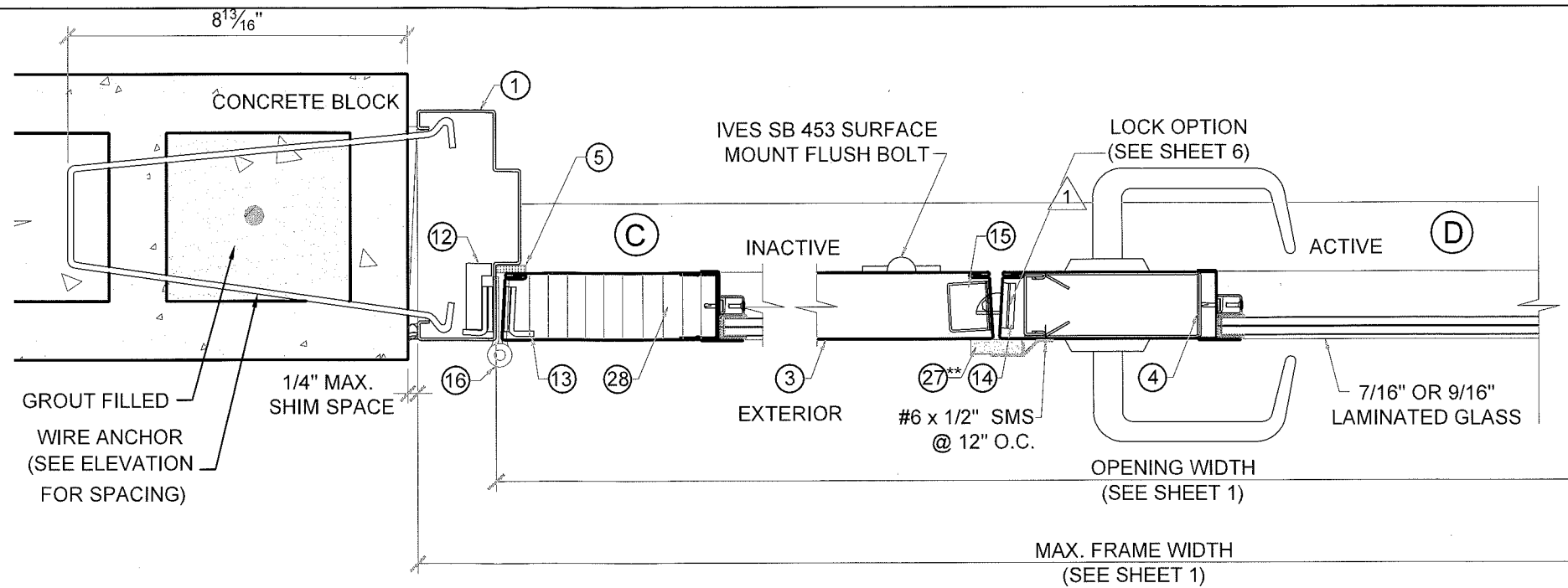
MCY ENGINEERING, INC.
 GLAZING CONSULTANTS
 8501 SW 124 AVE. STE. 205A P: 305.271.0117
 MIAMI, FL. 33183 F: 786.573.5063
 www.MCYUS.com
 MCY.Engineering@Att.net

GENSTORM GLAZED OUTSWING STEEL DOOR (LMI)
gensteeldoors
 4950 Hickmore, St. Laurent, Quebec, Canada H4T 1K6
 Tel: 514.733.1932
 Fax: 514.733.3562
 www.gensteeldoors.com

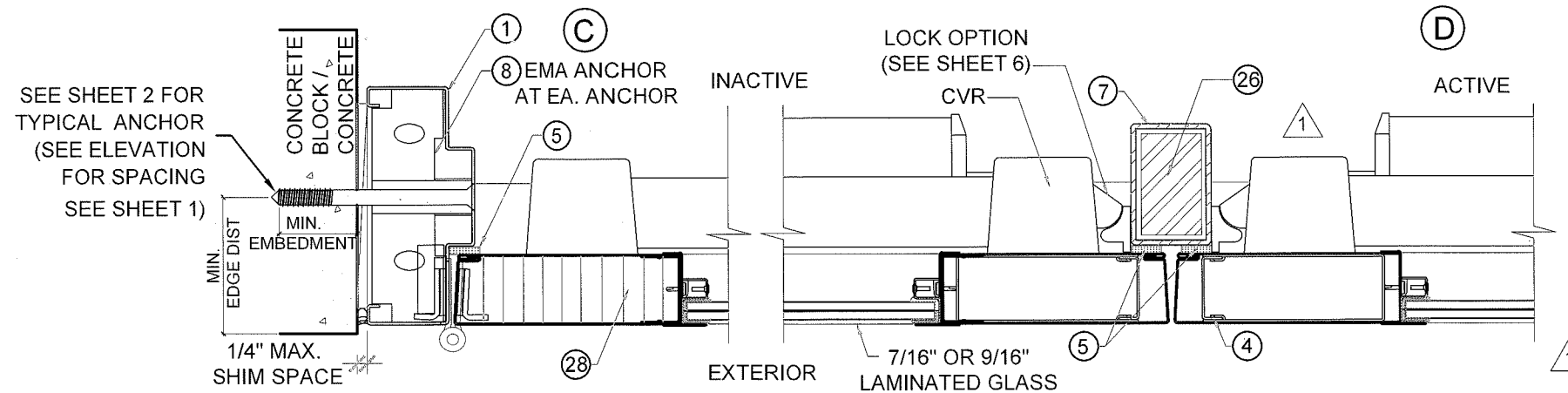
DATE	02-05-2009
SCALE	N.T.S.
DRAWN	S.L.
PROJECT	09-015
DRAWING NO.	AD-09-003
SHEET	2 OF 8



HC822
REMOVABLE MULLION
W/REINFORCEMENT



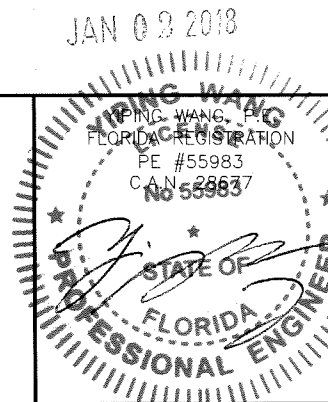
LOCK OPTION # 1
SERIES 8200 SARGENT MORTISE LOCK W/ SURFACE BOLTS (INACTIVE)



LOCK OPTION # 2
PRECISION HC2100 RIM PANIC EXIT W/ HC822 REINFORCE MULLION

PRODUCT REVISED
to comply with the Florida
Building Code
Acceptance No. 18-0116.18
Expiration Date 5/4/21
Yiping Wang
Senior Product Control

** 22 PEMKO 375 ASTRAGAL W/ SPONGE
NEOPRENE NOT REQUIRED, IF WATER
INFILTRATION NOT NEEDED,



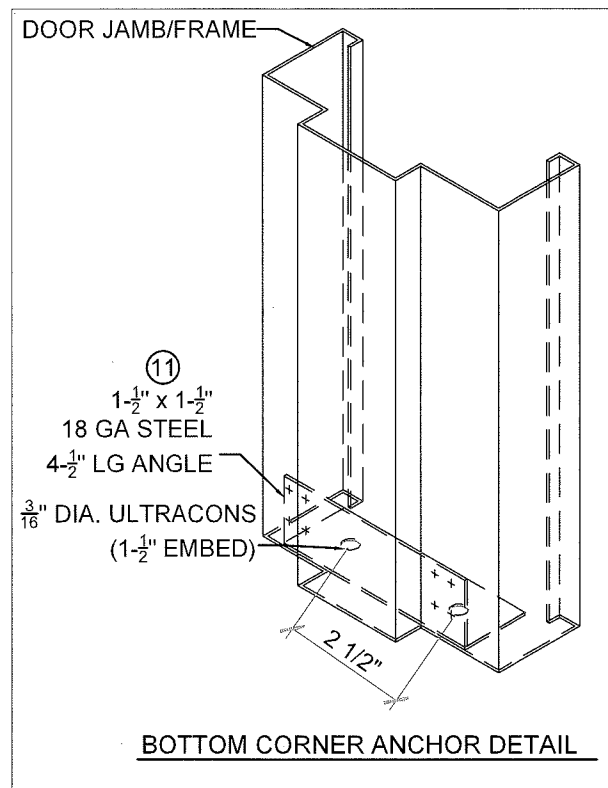
MIAMI DADE COUNTY

NO	DATE	DESCRIPTION
1	05/24/10	AS PER BCCO COMMENTS
2	07/31/15	UPDATE TO 2014 FBC

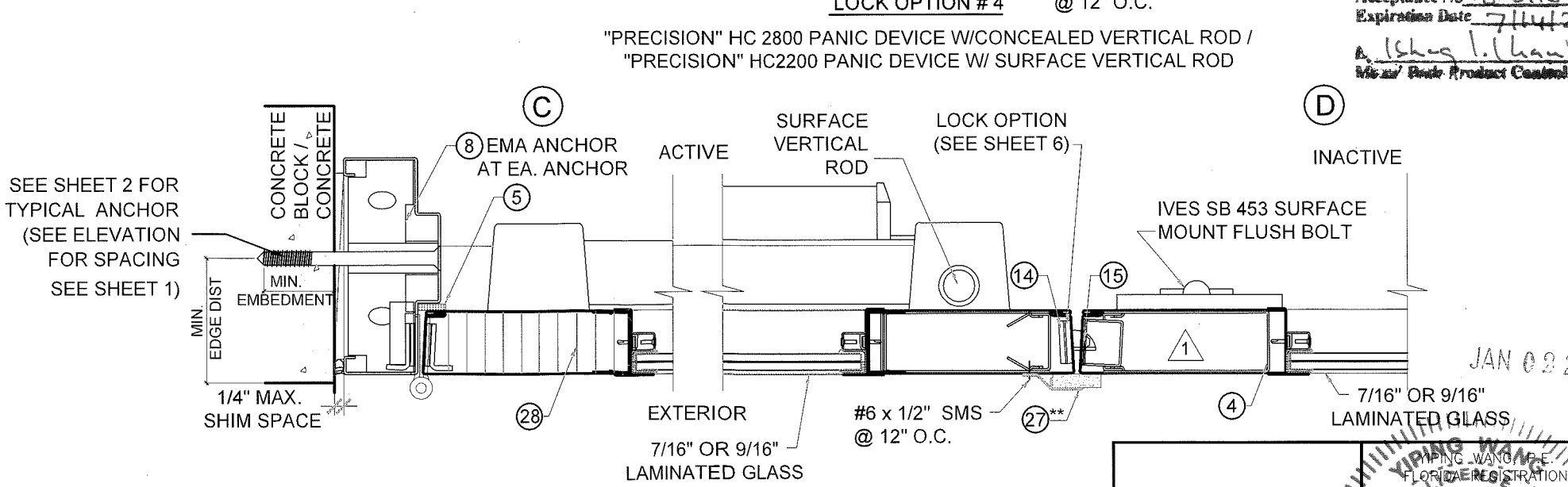
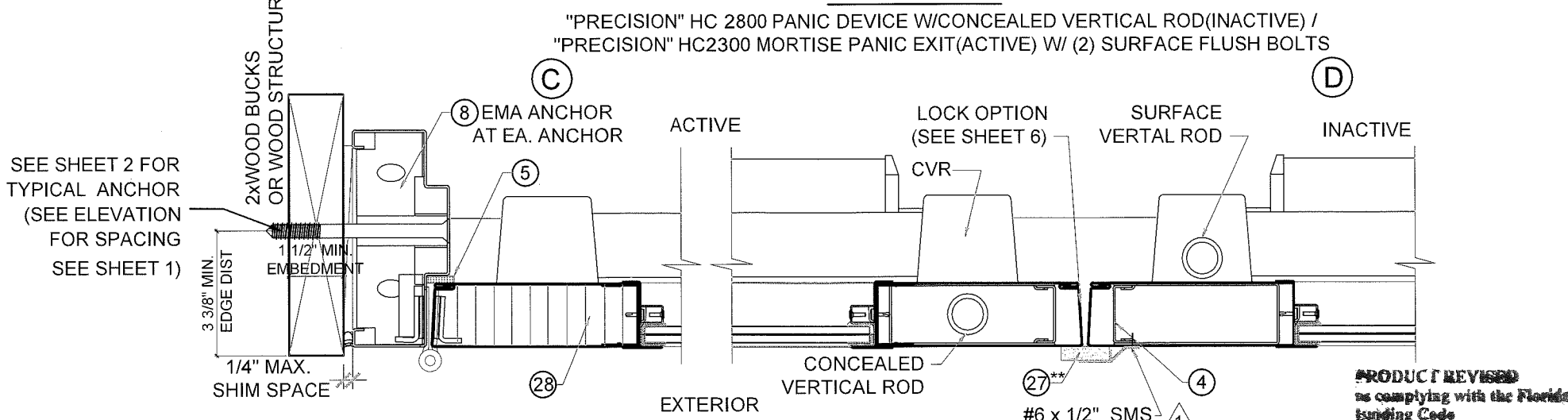
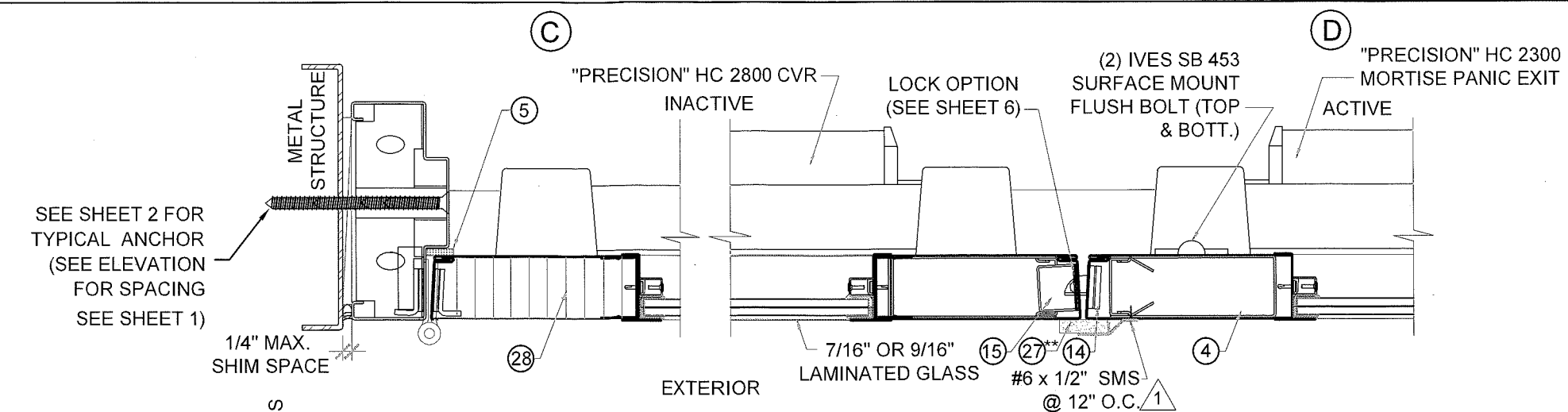
MCY
MCY ENGINEERING, INC.
 GLAZING CONSULTANTS
 8501 SW 124 AVE. STE. 205A P: 305.271.0117
 MIAMI, FL. 33183 F: 786.573.5063
 www.MCYUS.com
 www.MCYEngineering@Att.net

GENSTORM GLAZED OUTSWING STEEL DOOR (LMI)
gensteeldoors
 4950 Hickmore, St. Laurent, Quebec, Canada H4T 1K6
 Fax: 514.733.1932
 Tel: 514.733.3562
 www.gensteeldoors.com

DATE	02-05-2009
SCALE	N.T.S.
DRAWN	S.L.
PROJECT	09-015
DRAWING NO.	AD-09-003
SHEET	3 OF 8

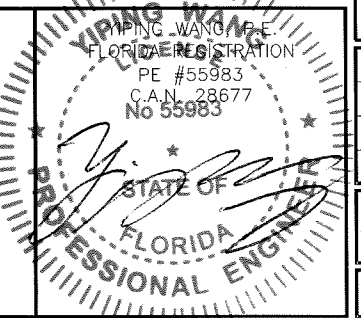


** 22 PEMKO 375 ASTRAGAL W/ SPONGE NEOPRENE NOT REQUIRED, IF WATER INFILTRATION NOT NEEDED,



PRODUCT REVISED
 as complying with the Florida Building Code
 Acceptance No. 18-0116-18
 Expiration Date 7/14/21
A. Ishag I. Ishaq
 Manufacturer Product Control

JAN 02 2018



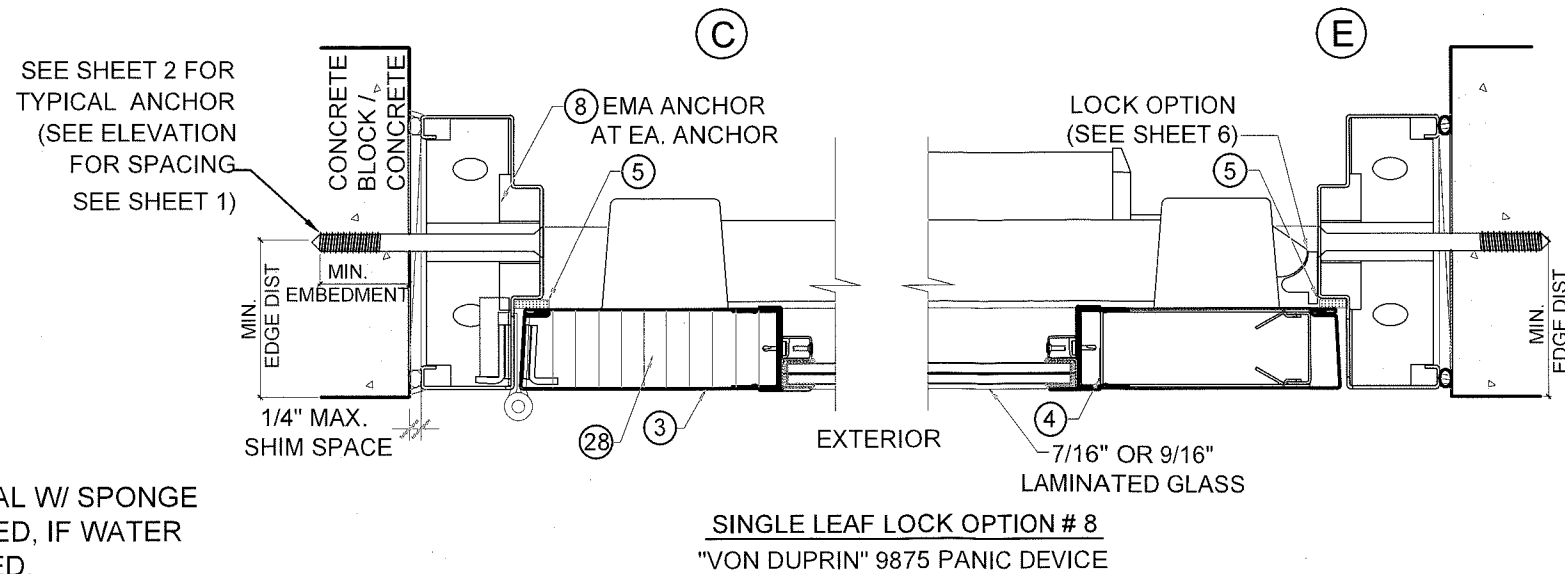
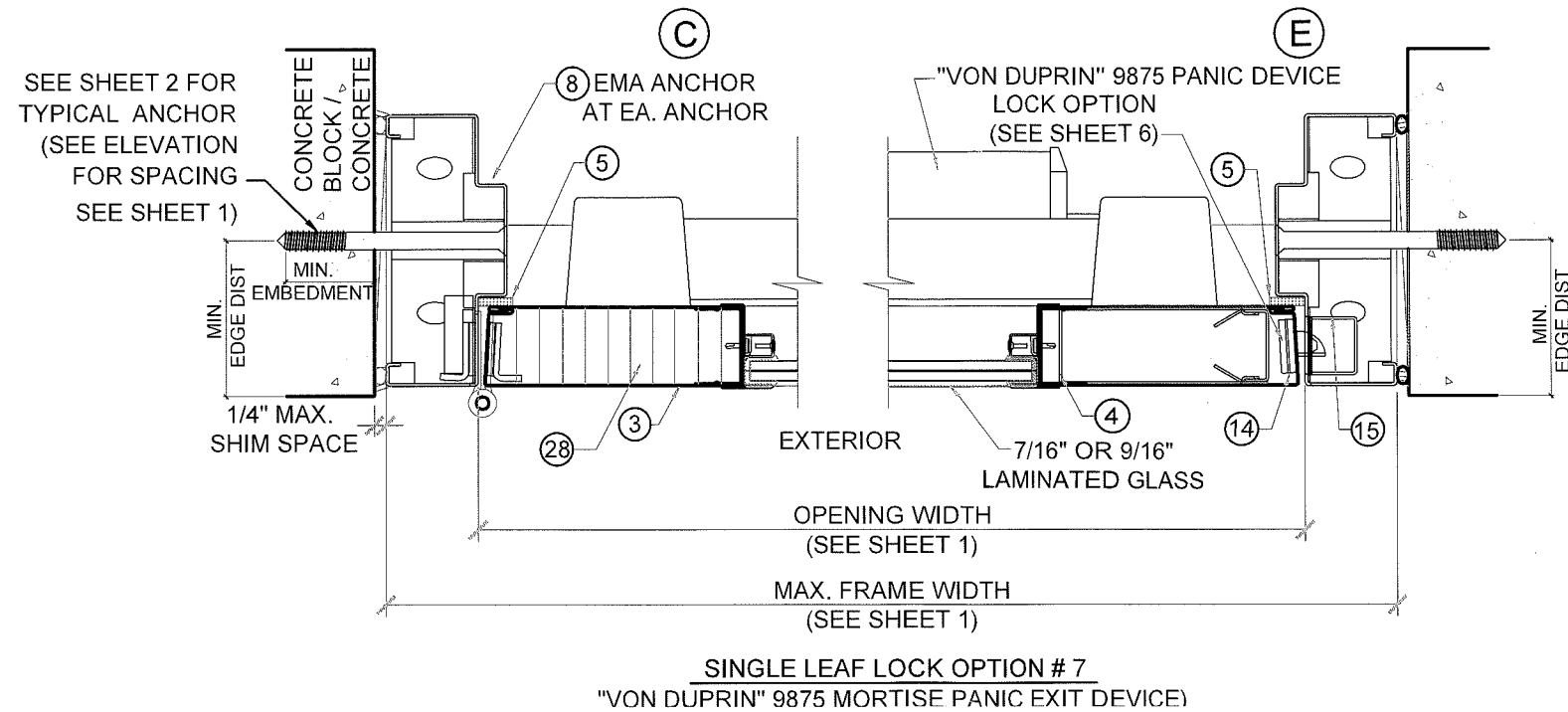
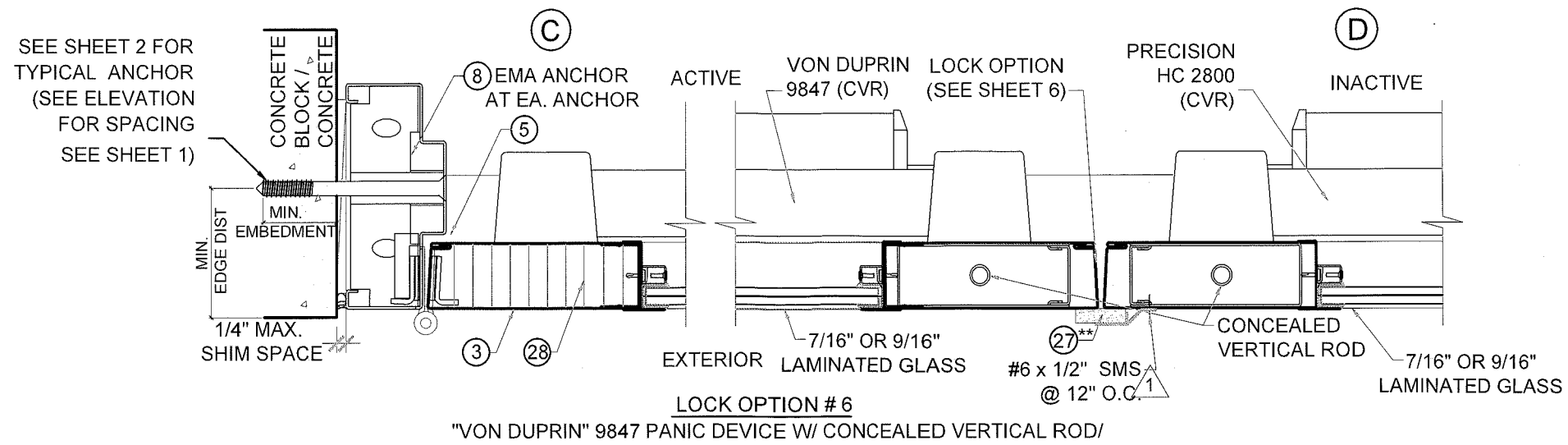
NO.	DATE	DESCRIPTION
1	05/24/10	AS PER BCCO COMMENTS
2	07/31/15	UPDATE TO 2014 FBC

MCY
MCY ENGINEERING, INC.
 GLAZING CONSULTANTS
 8501 SW 124 AVE. STE. 205A P. 305.271.0117
 MIAMI, FL. 33183 F. 786.573.5063
 www.MCYUS.com
 MCY.Engineering@att.net

GENSTORM GLAZED OUTSWING STEEL DOOR (LMI)
gensteeldoors
 4950 Hickmore St. Laurent, Quebec, Canada H4T 1K6
 Fax: 514.733.1932
 www.gensteeldoors.com

DATE	02-05-2009
SCALE	N.T.S.
DRAWN	S.L.
PROJECT	09-015
DRAWING NO.	AD-09-003
SHEET	4 OF 8

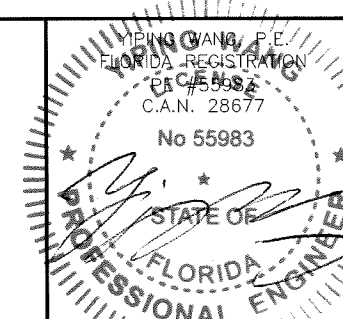
MIAMI DADE COUNTY



** 22 PEMKO 375 ASTRAGAL W/ SPONGE NEOPRENE NOT REQUIRED, IF WATER INFILTRATION NOT NEEDED,

PRODUCT REVISED
as complying with the Florida Building Code
Acceptance No. 18-0116-18
Expiration Date 7/14/21
E. I. Chang, P.E.
Miami, Florida (Product Control)

JAN 02 2018



MIAMI DADE COUNTY

NO	DATE	DESCRIPTION
1	05/24/10	AS PER BCCO COMMENTS
2	07/15/15	UPDATE TO 2014 FBC

MCY

MCY ENGINEERING, INC.
GLAZING CONSULTANTS

8501 SW 124 AVE. STE. 205A
MIAMI, FL. 33183
www.MCYUS.com

P: 305.271.0117
F: 786.573.5063
www.MCYEngineering@Att.net

GENSTORM GLAZED OUTSWING STEEL DOOR (LMI)

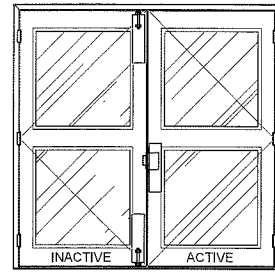
gensteeldoors

4950 Hickmore, St. Laurent, Quebec, Canada H4T 1K6
Tel: 514.733.3562
Fax: 514.733.1932
www.gensteeldoors.com

DATE	02-05-2009
SCALE	NTS.
DRAWN	S.L.
PROJECT	09-015
DRAWING NO.	AD-09-003
SHEET	5 OF 8

LOCK OPTIONS

LOCK OPTIONS FOR DOUBLE DOORS
CAN APPLY TO SINGLE DOORS



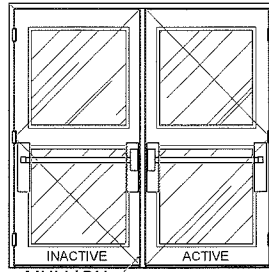
OPTION 1

ACTIVE LEAF:
"SARGENT" 8200 SURFACE MOUNT MORTISE LOCK WITH HANDLE. WITH SURFACE MOUNT METALLIC DEAD-BOLT. LOCATED 38" FROM BOTTOM WITH (2) 8-32 x 1/4" FH MS

INACTIVE LEAF:
6-3/4" LONG 18 GA STRIKE BOX TO BE FASTENED BY (2)#12-24 SCREWS
"IVES" SB453 SURFACE MOUNT MANUALLY OPERATED FLUSH BOLT AT TOP AND BOTTOM. WITH (4) 1/4-20 x 1-3/8" FH MS

SURFACE MOUNT METALLIC STRIKE PLATE AT FRAME HEAD TO BE FASTENED WITH (2) #10 x 1-1/4" FH SMS

DESIGN LOAD
(FOR SIZES SHOWN ABOVE OR SMALLER)
+80.0 PSF
-80.0 PSF



OPTION 2

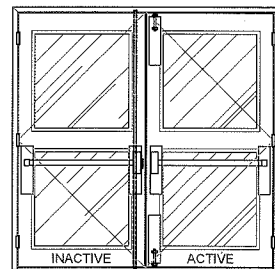
(PRECISION RIM EXIT W. MULLION)

ACTIVE LEAF:
"PRECISION" HC2100 RIM EXIT PANIC DEVICE. SURFACE MOUNT LOCATED 41-3/4" FROM BOTTOM WITH BY (4) 10-20 x 1-1/4" OH MS

INACTIVE LEAF:
"PRECISION" HC2100 RIM EXIT MECHANISM. SURFACE MOUNT TWO POINT LOCK SYSTEM WITH PANIC DEVICE LOCATED 41-3/4" FROM BOTTOM WITH BY (4) 1/4-20 x 1" FH MS

MULLION:
HC822 PRECISION HARDWARE REMOVABLE WITH (4) 1/2" 20 x 1/2" MS OR #14 x 1" SMS AT TOP. 3/8" x 2-1/4" SLEEVE ANCHOR EMBEDDED 1-1/2" INTO CONCRETE AT BOTTOM.

DESIGN LOAD
(FOR SIZES SHOWN ABOVE OR SMALLER)
+65.0 PSF
-65.0 PSF

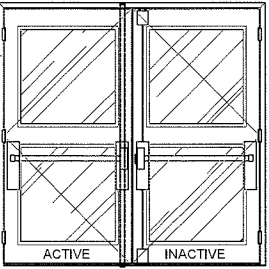


OPTION 3

ACTIVE LEAF:
"PRECISION" HC2300 MORTISE PANIC EXIT. SURFACE MOUNT MANUALLY OPERATED FLUSH BOLT AT TOP AND BOTTOM. WITH (4) 10 x 1-1/4" FH SMS

INACTIVE LEAF:
"PRECISION" HC2800 CONCEALED VERTICAL ROD. SURFACE MOUNT TWO POINT LOCK SYSTEM WITH "PRECISION" PANIC DEVICE LOCATED 40" FROM BOTTOM WITH (4) 10-24 x 1-1/4" OH MS

DESIGN LOAD
(FOR SIZES SHOWN ABOVE OR SMALLER)
+65.0 PSF
-65.0 PSF



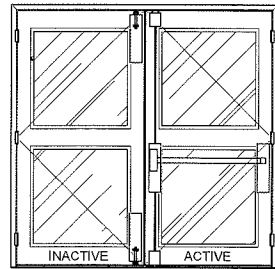
OPTION 4

ACTIVE LEAF:
"PRECISION" HC2800 CONCEALED VERTICAL ROD. SURFACE MOUNT TWO POINT LOCK SYSTEM WITH PRECISION PANIC DEVICE WITH (4) 10-24 x 1-1/4". LOCATED 39-1/2" FROM BOTTOM

INACTIVE LEAF:
"PRECISION" HC2200 SURFACE VERTICAL ROD. SURFACE MOUNT TWO POINT LOCK SYSTEM WITH PRECISION PANIC DEVICE WITH (4) 10-24 x 1-1/4" OH MS. LOCATED 39-1/2" FROM BOTTOM

(2)-SURFACE MOUNT METALLIC STRIKE PLATE AT HEAD TO BE FASTENED WITH (2) 1/4-20 FH MS

DESIGN LOAD
(FOR SIZES SHOWN ABOVE OR SMALLER)
+65.0 PSF
-65.0 PSF

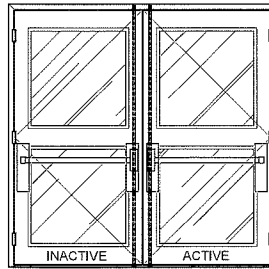


OPTION 5

ACTIVE LEAF:
"PRECISION" HC2200 SURFACE VERTICAL ROD. (4) 10-24 x 1-1/4" OH MS. LOCATED 39-3/4" FROM BOTTOM

INACTIVE LEAF:
"IVES" SB453 SURFACE MOUNT MANUALLY OPERATED FLUSH BOLT. TO BE FASTENED WITH (4) 12 x 1-1/4" FH MS

DESIGN LOAD
(FOR SIZES SHOWN ABOVE OR SMALLER)
+80.0 PSF
-80.0 PSF

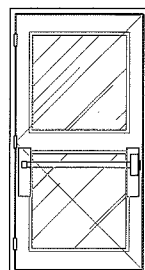


OPTION 6

ACTIVE LEAF:
"VON DUPRIN" 9847 CONCEALED VERTICAL ROD WITH PANIC DEVICE WITH (2) 8-32 x 3/8" FH MS. LOCATED 39-3/4" FROM BOTTOM

INACTIVE LEAF:
"PRECISION" HC2800 CONCEALED VERTICAL ROD. SURFACE MOUNT TWO POINT LOCK SYSTEM WITH PANIC DEVICE WITH (4) 10-24 x 1-1/4". LOCATED 39-1/2" FROM BOTTOM

DESIGN LOAD
(FOR SIZES SHOWN ABOVE OR SMALLER)
+80.0 PSF
-80.0 PSF



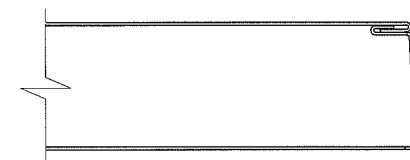
OPTION 7

SINGLE PANEL DOOR ONLY:
"VON DUPRIN" 9875 MORTISE PANIC EXIT WITH (2) 8-32 x 3/8" FH MS. LOCATED 39-3/4" FROM BOTTOM

DESIGN LOAD
(FOR SIZES SHOWN ABOVE OR SMALLER)
+65.0 PSF
-65.0 PSF

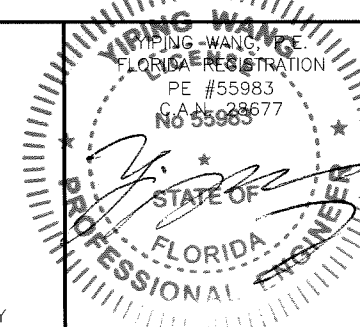
HINGES: STEEL MORTISE HINGES 3 PER LEAF. LOCATED AT 9-5/8" MAX. FROM TOP OF DOOR TO CENTER LINE OF 1ST HINGE. BALANCE TO BE SPACED OUT NOT TO EXCEED 37-15/16" MAX. FROM CL TO CL OF HINGE. TO BE FASTENED BY #12-24 x 1/2" FLATHEAD MACHINE SCREWS.

PRODUCT REVISED
as complying with the Florida
Building Code
Acceptance No. 18-0116-18
Expiration Date 7/24/21
Michael J. Chant
Miami Steel Products Control



DOOR EDGE CONSTRUCTION

JAN 03 2018



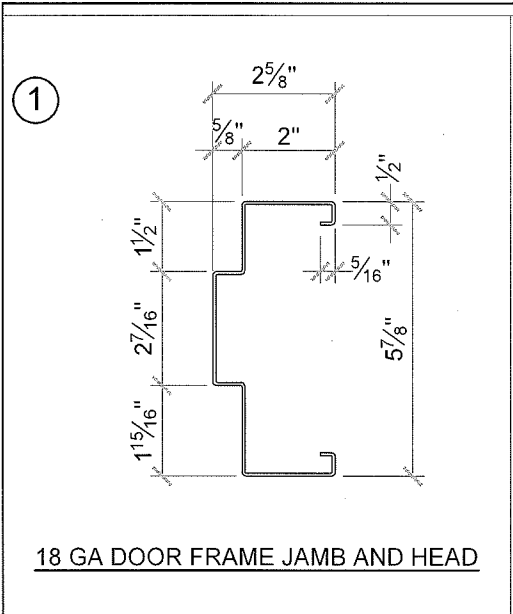
MIAMI DADE COUNTY

NO.	DATE	DESCRIPTION
1	05/24/10	AS PER BCCO COMMENTS
2	07/31/15	UPDATE TO 2014 FBC

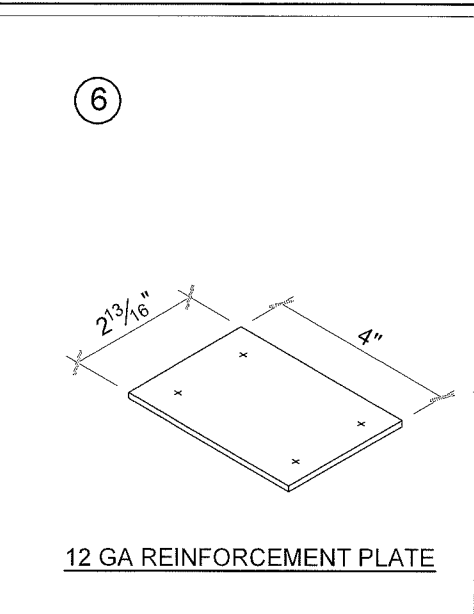
MCY ENGINEERING, INC.
GLAZING CONSULTANTS
8501 SW 124 AVE. STE. 205A P: 305.271.0117
MIAMI, FL. 33183 F: 786.573.5063
www.MCYUS.com
www.MCYEngineering@Att.net

GENSTORM GLAZED OUTSWING STEEL DOOR (LMI)
gensteeldoors
4950 Hickmore, St. Laurent, Quebec, Canada H4T 1K6
Tel: 514.733.1932
www.gensteeldoors.com

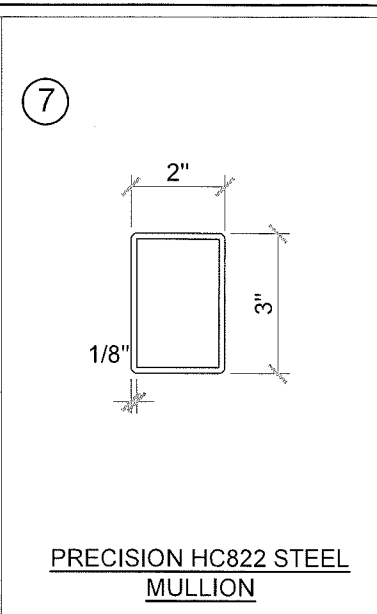
DATE	02-05-2009
SCALE	NTS
DRAWN	S.L.
PROJECT	09-015
DRAWING NO.	AD-09-003
SHEET	6 OF 8



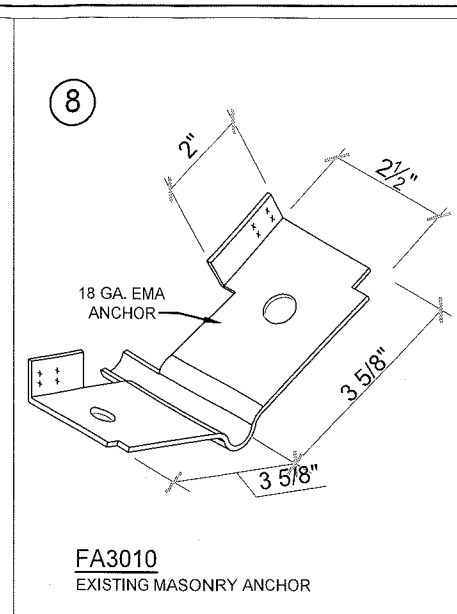
18 GA DOOR FRAME JAMB AND HEAD



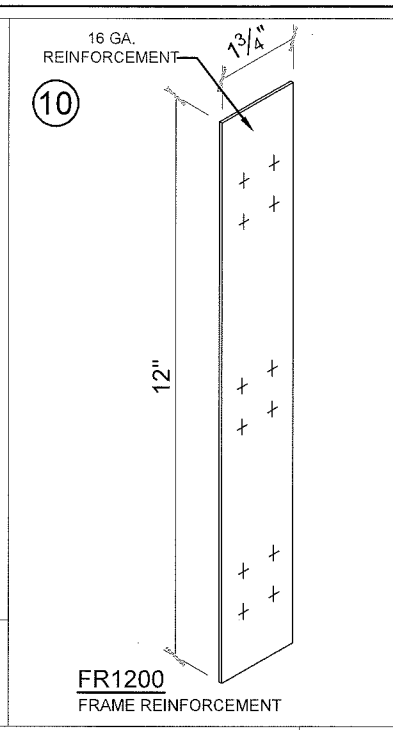
12 GA REINFORCEMENT PLATE



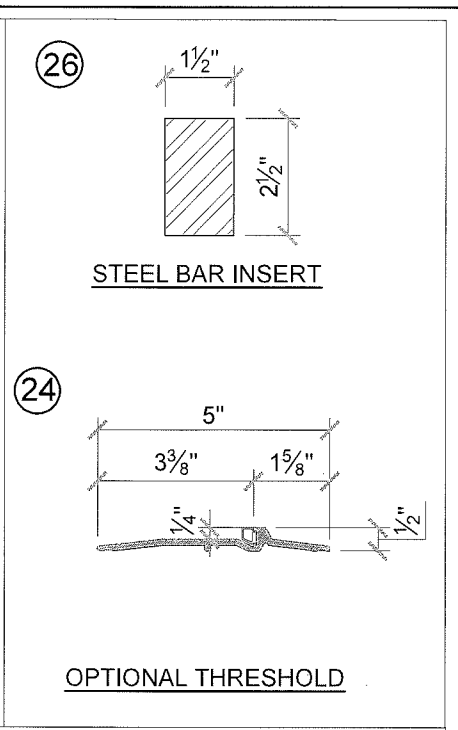
PRECISION HC822 STEEL MULLION



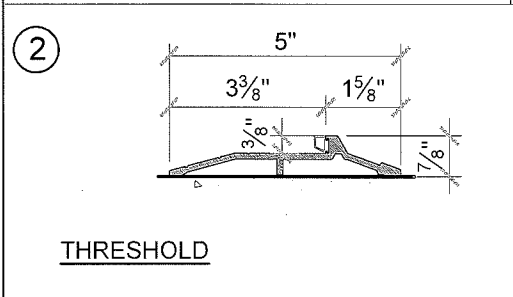
FA3010 EXISTING MASONRY ANCHOR



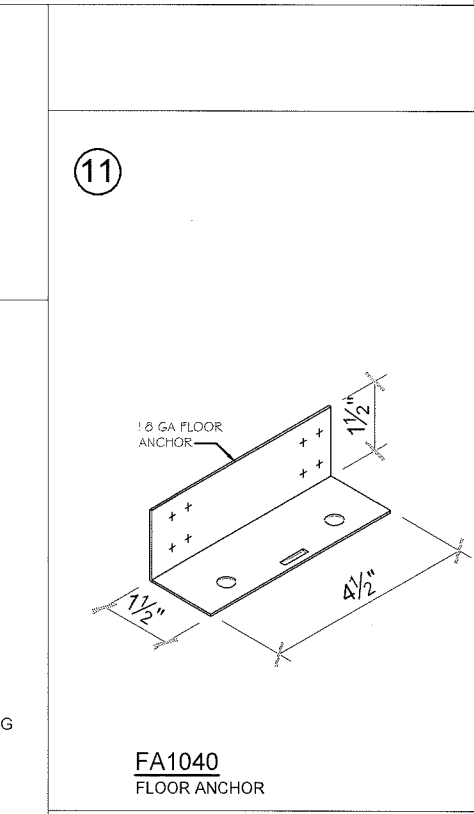
FR1200 FRAME REINFORCEMENT



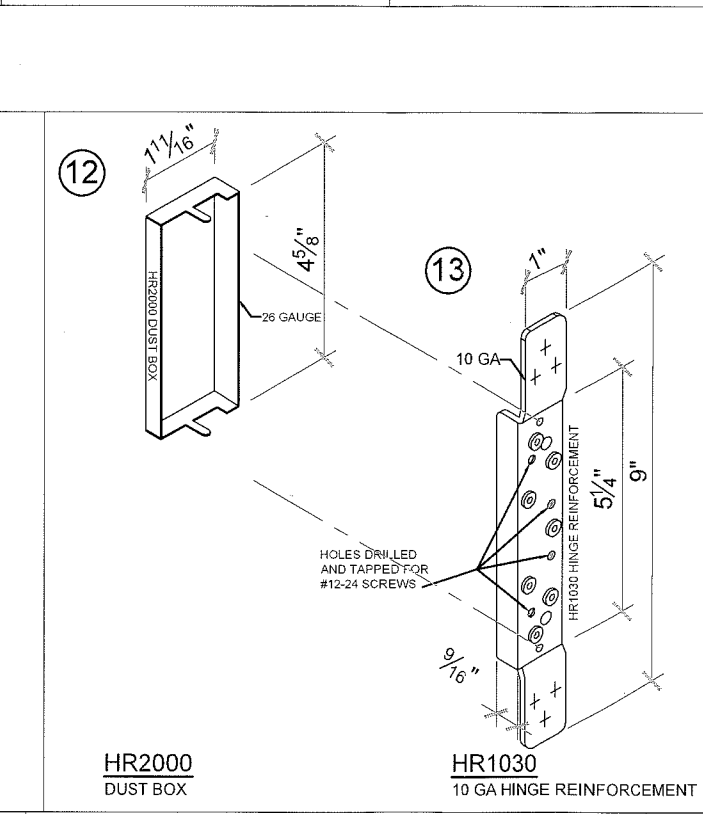
OPTIONAL THRESHOLD



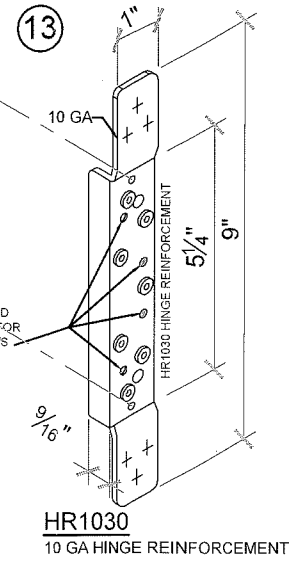
THRESHOLD



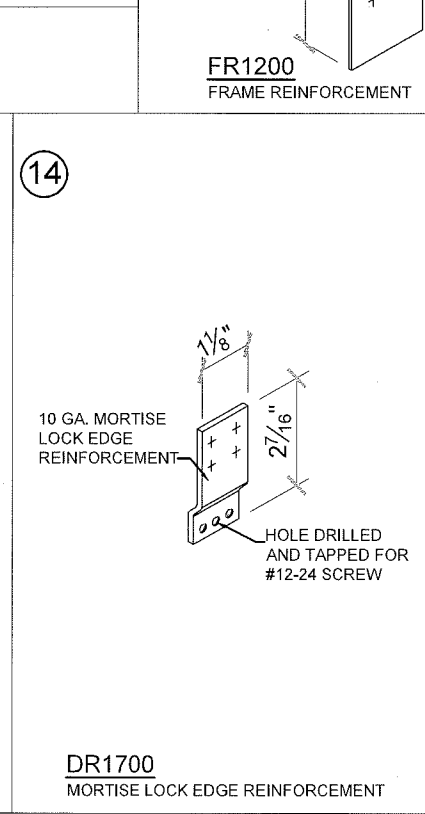
FA1040 FLOOR ANCHOR



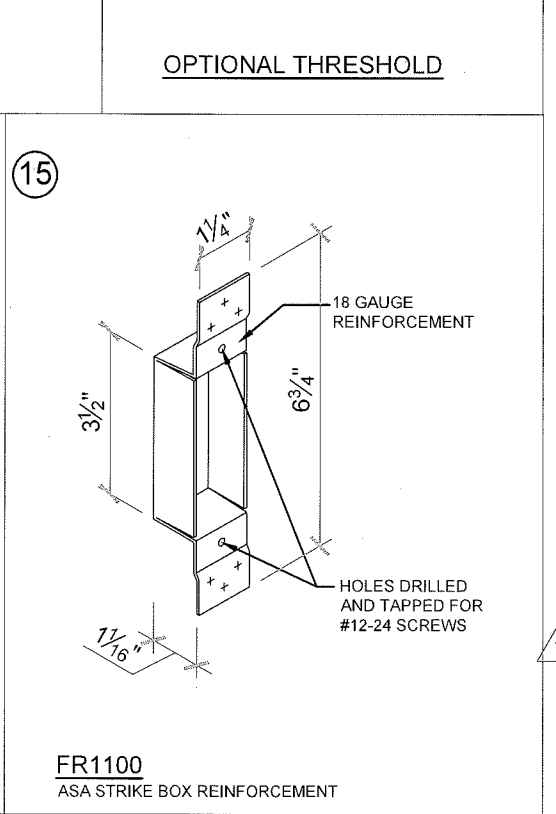
HR2000 DUST BOX



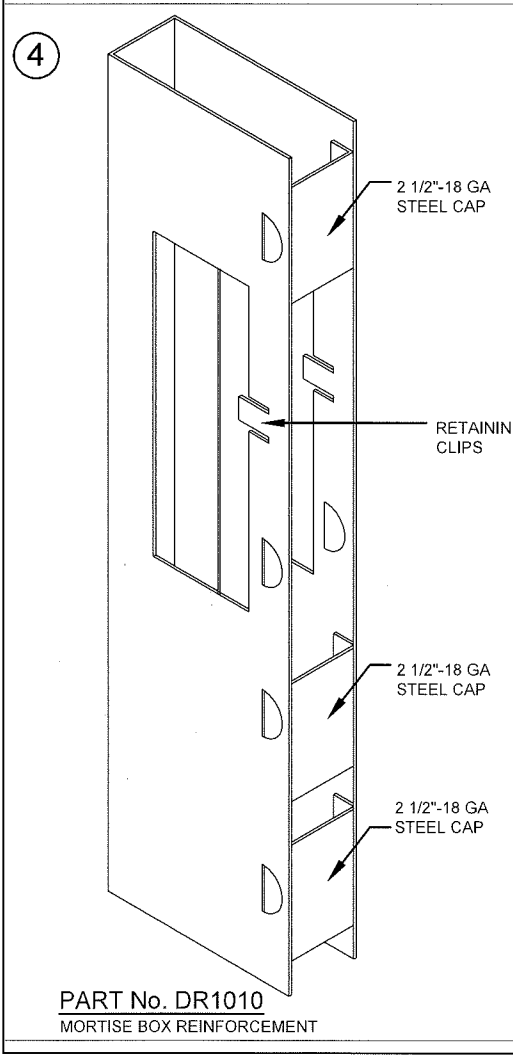
HR1030 10 GA HINGE REINFORCEMENT



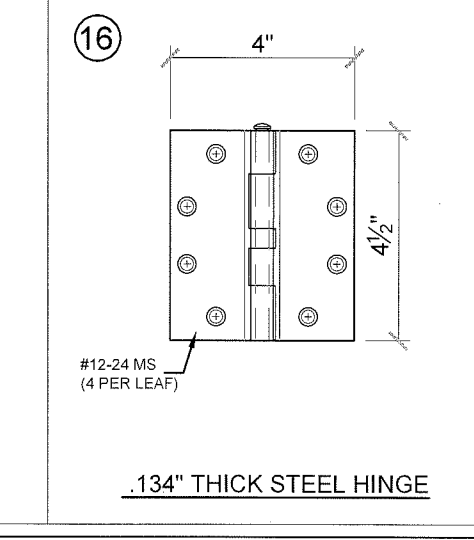
DR1700 MORTISE LOCK EDGE REINFORCEMENT



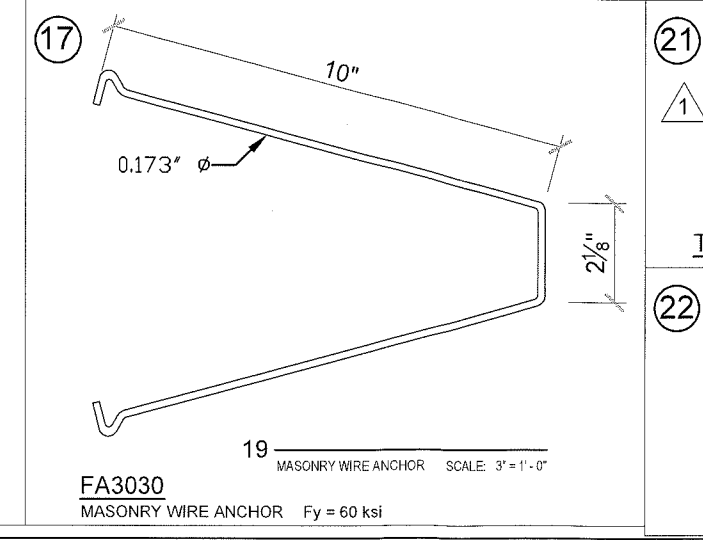
FR1100 ASA STRIKE BOX REINFORCEMENT



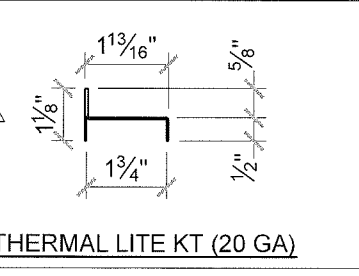
PART No. DR1010 MORTISE BOX REINFORCEMENT



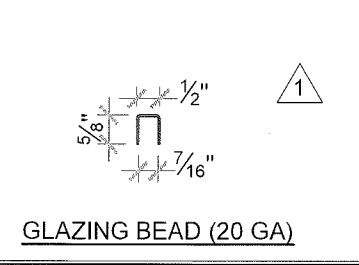
.134\"/>



FA3030 MASONRY WIRE ANCHOR Fy = 60 ksi

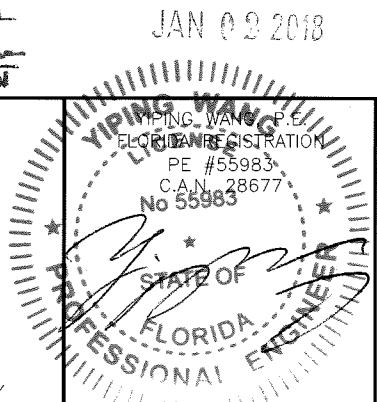


THERMAL LITE KT (20 GA)



GLAZING BEAD (20 GA)

PRODUCT REVISED
 as complying with the Florida
 Building Code
 Acceptance No. 18-0116-18
 Expiration Date 7/4/21
 A. Shagil. Chandra
 Technical Product Control



NO	DATE	DESCRIPTION
1	06/24/19	AS PER BCCO COMMENTS
2	07/31/15	UPDATE TO 2014 FBC

MCY ENGINEERING, INC.
 GLAZING CONSULTANTS

MCY

8501 SW 124 AVE. STE. 205A P: 305.271.0117
 MIAMI, FL. 33183 F: 786.573.5063

www.MCYUS.com MCY.Engineering@Att.net

GENSTORM GLAZED OUTSWING STEEL DOOR (LMI)

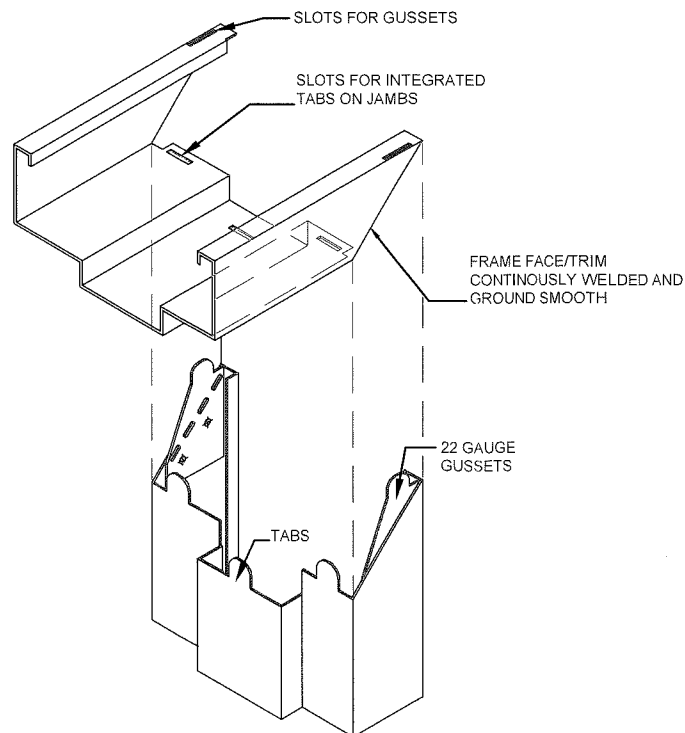
Gensteeldoors

4950 Hickmore, St. Laurent, Quebec, Canada H4T 1K6
 Tel: 514.733.1932 Fax: 514.733.3562
 www.gensteeldoors.com

DATE	02-05-2009
SCALE	NTS.
DRAWN	S.L.
PROJECT	09-015
DRAWING NO.	AD-09-003
SHEET	7 OF 8

BILL OF MATERIALS

ITEM	PART No.	MATERIAL	QTY.	DESCRIPTION	MANUFACTURER/SUPPLIER/ REMARKS
1	-	STEEL DR ST/ST	AS REQD.	FRAME HEAD/JAMB (5- $\frac{7}{8}$ ' x 2')	18 GA. (0.048MIN.) Fy= 42 KSI MIN.
2	PMK177	ALUMINUM	1	THRESHOLD WITH THERMO SEAL INSERT ¹	PEMKO 177AT
3	-	STEEL DR ST/ST	AS REQD.	DOOR PANEL	20 GA. (0.036MIN.) Fy= 42 KSI MIN.
4	DR1010	STEEL	AS REQD.	MORTISE BOX REINFORCEMENT	GENSTEEL
5	P 387	-	AS REQD.	PEMKO 387 CLOSED CELL SPONGE WEATHERSTRIP	PEMKO
6	-	STEEL	AS REQD.	2- $\frac{3}{16}$ ' x 4' 12 GA. STEEL REINFORCEMENT	GENSTEEL
7	HC822	STEEL	AS REQD.	2' X 3' X 1/8" THK. REMOVABLE MULLION	PRECISION HARDWARE HC822 Fy = 46 KSI
8	FA3010	STEEL	AS REQD.	EXISTING MASONRY ANCHOR	GENSTEEL
9	SB453	-	AS REQD.	SURFACE BOLT	IVES SB453
10	FR1200	STEEL	AS REQD.	1- $\frac{3}{4}$ ' x 12' 16 GA. FRAME REINFORCEMENT	GENSTEEL
11	FA1040	STEEL	2	FLOOR ANCHOR 18 GA. (1- $\frac{1}{2}$ ' x 1- $\frac{1}{2}$ ' x 4- $\frac{1}{2}$ ' LG)	GENSTEEL
12	HR2000	STEEL	3 PER LEAF	HINGE DUSTBOX	GENSTEEL
13	HR1030	STEEL	3 PER LEAF	HINGE REINFORCEMENT WELDED TO FRAME	GENSTEEL
14	DR1700	STEEL	AS REQD.	MORTISE LOCK EDGE REINFORCEMENT WELDED	GENSTEEL
15	FR1100	STEEL	AS REQD.	ASA STRIKE BOX	GENSTEEL
16	179-454	STEEL	3 PER LEAF	DOREX, HAGER #179-454-15 HINGE	STANLEY
17	FA3030	STEEL	AS REQD.	MASONRY WIRE ANCHOR	0.173 DIA. Fy=60 KSI
18	-	STEEL	AS REQD.	20GA. DUSTBOX	GENSTEEL
19	-	STEEL	AS REQD.	20GA. CHANNEL AROUND PERIMETER OF LITE CUT-OUT	GENSTEEL
20	-	STEEL	AS REQD.	#6 x $\frac{1}{2}$ ' MIN. SMS	@ 3' FROM END
21	-	STEEL	AS REQD.	STD. 20 GA. THERMAL LITE KIT	GENSTEEL
22	-	STEEL	AS REQD.	20 GA. GLAZING BEAD	GENSTEEL
23	-	STEEL	AS REQD.	#6 x 1' GLAZING BEAD SCREWS	@ 2' FROM ENDS & SPACED 10- $\frac{3}{4}$ ' O.C. MAX.
24	PMK 2005AT	ALUMINUM	1	OPTIONAL THRESHOLD WITH THERMO SEAL INSERT	PEMKO 2005AT
25	PEMKO0315-N	-	1 PER LEAF.	WEATHERSTRIP AT BOTTOM OF PANEL	PEMKO
26	-	STEEL	1 PER MULLION	1 1/2' x 2 1/2' FULL LENGTH STEEL BAR REINFORMENT	A36 PRECISION HARDWARE HC822 INSERT
27	PEMKO P375	-	AS REQD.	PEMKO 375CR ASTRAGAL WITH SPONGE NEOPRENE	PEMKO WEATHERSTRIPPING
28	HONEYCOMB	-	AS REQD.	INSIDE OF DOOR PANEL	¹ GENSTEEL



PRODUCT REVISED
 as complying with the Florida
 Building Code
 Acceptance No. 18-0116.18
 Expiration Date 7/14/22
Isaac I. Chaudhry
 Major/State Product Control

JAN 03 2018

YIPING WANG, P.E.
 FLORIDA REGISTRATION
 PE #55983
 No. 28677

STATE OF
 FLORIDA
 PROFESSIONAL ENGINEER

MIAMI DADE COUNTY

NO.	DATE	DESCRIPTION
1	05/24/10	AS PER BCCO COMMENTS
2	07/31/15	UPDATE TO 2014 FEC

MCY ENGINEERING, INC.
 GLAZING CONSULTANTS

8501 SW 124 AVE. STE. 205A P: 305.271.0117
 MIAMI, FL 33183 F: 786.573.5063
 www.MCYUS.com MCY.Engineering@Att.net

GENSTORM GLAZED OUTSWING STEEL DOOR (LMI)

4950 Hickmore, St. Laurent, Quebec, Canada H4T 1K6
 Tel: 514.733.1932 Fax: 514.733.3562
 www.gensteeldoors.com

DATE	02-05-2009
SCALE	NTS.
DRAWN	S.L.
PROJECT	09-015
DRAWING NO.	
AD-09-003	
SHEET 8 OF 8	