



DEPARTMENT OF REGULATORY AND ECONOMIC RESOURCES (RER)
BOARD AND CODE ADMINISTRATION DIVISION

MIAMI-DADE COUNTY
PRODUCT CONTROL SECTION
11805 SW 26 Street, Room 208
T (786) 315-2590 F (786) 315-2599

NOTICE OF ACCEPTANCE (NOA)

www.miamidade.gov/economy

Gensteel Doors Inc.
4950 Hickmore Street
Ville St. Laurent, Quebec, Canada H4T1K6

SCOPE:

This NOA is being issued under the applicable rules and regulations governing the use of construction materials. The documentation submitted has been reviewed and accepted by Miami-Dade County RER - Product Control Section to be used in Miami Dade County and other areas where allowed by the Authority Having Jurisdiction (AHJ).

This NOA shall not be valid after the expiration date stated below. The Miami-Dade County Product Control Section (In Miami Dade County) and/or the AHJ (in areas other than Miami Dade County) reserve the right to have this product or material tested for quality assurance purposes. If this product or material fails to perform in the accepted manner, the manufacturer will incur the expense of such testing and the AHJ may immediately revoke, modify, or suspend the use of such product or material within their jurisdiction. RER reserves the right to revoke this acceptance, if it is determined by Miami-Dade County Product Control Section that this product or material fails to meet the requirements of the applicable building code.

This product is approved as described herein, and has been designed to comply with the Florida Building Code, including the High Velocity Hurricane Zone.

DESCRIPTION: Series "GenStorm" Steel Storefront System – L.M.I.

APPROVAL DOCUMENT: Drawing No. AD14-01, titled "GenStorm Steel Storefront System – LMI & SMI", sheets 1 through 8 of 8, dated 09/18/14, with revision #1 dated 03/29/18, prepared by MCY Engineering, Inc., signed and sealed by Yiping Wang, P.E., bearing the Miami-Dade County Product Control Revision stamp with the Notice of Acceptance number and expiration date by the Miami-Dade County Product Control Section.

MISSILE IMPACT RATING: Large and Small Missile Impact Resistant

LABELING: Each unit shall bear a permanent label with the manufacturer's name or logo, city, state, model/series, and following statement: "Miami-Dade County Product Control Approved", unless otherwise noted herein.

RENEWAL of this NOA shall be considered after a renewal application has been filed and there has been no change in the applicable building code negatively affecting the performance of this product.

TERMINATION of this NOA will occur after the expiration date or if there has been a revision or change in the materials, use, and/or manufacture of the product or process. Misuse of this NOA as an endorsement of any product, for sales, advertising or any other purposes shall automatically terminate this NOA. Failure to comply with any section of this NOA shall be cause for termination and removal of NOA.

ADVERTISEMENT: The NOA number preceded by the words Miami-Dade County, Florida, and followed by the expiration date may be displayed in advertising literature. If any portion of the NOA is displayed, then it shall be done in its entirety.

INSPECTION: A copy of this entire NOA shall be provided to the user by the manufacturer or its distributors and shall be available for inspection at the job site at the request of the Building Official.

This NOA revises NOA# 14-0602.07 and consists of this page 1 and evidence pages E-1, E-2 and E-3, as well as approval document mentioned above.

The submitted documentation was reviewed by **Manuel Perez, P.E.**



YP
2/4/19

NOA No. 18-0116.15
Expiration Date: October 02, 2019
Approval Date: May 03, 2018
Page 1

NOTICE OF ACCEPTANCE: EVIDENCE SUBMITTED

1. EVIDENCE SUBMITTED UNDER PREVIOUS NOA's

A. DRAWINGS

1. Manufacturer's die drawings and sections.
(Submitted under NOA# 14-1602.07)
2. Drawing No **AD14-01**, titled "GenStorm Steel Storefront System – LMI & SMI", sheets 1 through 8 of 8, dated 09/18/14, prepared by MCY Engineering, Inc., signed and sealed by Yiping Wang, P.E.

B. TESTS

1. Test reports on:
 - 1) Air Infiltration Test, per FBC, TAS 202-94
 - 2) Uniform Static Air Pressure Test, Loading per FBC TAS 202-94
 - 3) Water Resistance Test, per FBC, TAS 202-94
 - 4) Large Missile Impact Test per FBC, TAS 201-94
 - 5) Cyclic Wind Pressure Loading per FBC, TAS 203-94
 - 6) Forced Entry Test, per FBC 2411 3.2.1, TAS 202-94along with marked-up drawings and installation diagram of a steel storefront system with outswing steel double doors, prepared by Fenestration Testing Laboratory, Inc., Test Report No. **FTL-7224**, dated 12/17/13, signed and sealed by Marlin D. Brinson, P.E.

C. CALCULATIONS

1. Anchor verification calculations and structural analysis, complying with **FBC 5th Edition (2014)**, dated 05/26/14 and 09/15/14, prepared by MCY Engineering, Inc., signed and sealed by Yiping Wang, P.E.
2. Glazing complies with **ASTM E1300-04**.

D. QUALITY ASSURANCE

1. Miami-Dade Department of Regulatory and Economic Resources (RER)

E. MATERIAL CERTIFICATIONS

1. Notice of Acceptance No. **13-0129.27** issued to **E.I. DuPont DeNemours & Co., Inc.** for their "**DuPont Butacite® PVB Interlayer**" dated 04/11/13, expiring on 12/11/16.
2. Notice of Acceptance No. **13-0909.10** issued to **Polymer Extrusion Technology, Inc. dba Glasslam** for their "**Glasslam Safety-Plus II Glass Interlayer**" dated 10/03/13, expiring on 08/07/18.
3. Notice of Acceptance No. **13-0717.01** issued to **Sabic Innovative Plastics** for their "**Lexan® Polycarbonate Sheet Products**", dated 11/28/13, expiring on 07/17/18.


Manuel Pérez, P.E.
Product Control Examiner
NOA No. 18-0116.15

Expiration Date: October 02, 2019
Approval Date: May 03, 2018

NOTICE OF ACCEPTANCE: EVIDENCE SUBMITTED

F. STATEMENTS

1. Statement letter of conformance, complying with **FBC 5th Edition (2014)**, dated September 15, 2014, issued by MCY Engineering, Inc., signed and sealed by Yiping Wang, P.E.
2. Statement letter of no financial interest, dated March 10, 2014, issued by MCY Engineering, Inc., signed and sealed by Yiping Wang, P.E.
3. Distributor Agreement between Gensteel Doors, Inc., Quebec Canada and North American Door Corp., Plattsburgh, New York, dated May 15, 2014, signed by Bruno Gervasi and Antonio Gervasi, respectively.
4. Proposal No. **12-0796** issued by the Product Control Section, dated July 10, 2012, signed by Manuel Perez, P.E.

G. OTHERS

1. None.


Manuel Perez, P.E.

Product Control Examiner
NOA No. 18-0116.15
Expiration Date: October 02, 2019
Approval Date: May 03, 2018

NOTICE OF ACCEPTANCE: EVIDENCE SUBMITTED

2. NEW EVIDENCE SUBMITTED

A. DRAWINGS

1. Drawing No **AD14-01**, titled “GenStorm Steel Storefront System – LMI & SMI”, sheets 1 through 8 of 8, dated 09/18/14, with revision #1 dated 03/29/18, prepared by MCY Engineering, Inc., signed and sealed by Yiping Wang, P.E.

B. TESTS

1. None

C. CALCULATIONS

1. None.

D. QUALITY ASSURANCE

1. Miami-Dade Department of Regulatory and Economic Resources (RER)

E. MATERIAL CERTIFICATIONS

1. Notice of Acceptance No. **16-1117.01** issued to **Kuraray America, Inc.** for their “**Trosifol® Ultraclear, Clear and Color PVB Glass Interlayers**” dated 01/19/17, expiring on 07/08/19.
2. Notice of Acceptance No. **16-0208.12** issued to **Polymer Extrusion Technology, Inc.** dba Glasslam for their “**Glasslam Safety-Plus II Glass Interlayer**” dated 06/16/16, expiring on 08/07/18.
3. Notice of Acceptance No. **15-0915.08** issued to **Sabic Innovative Plastic, US, LLC** for their “**LEXAN® Polycarbonate Sheet Products**” dated 12/10/15, expiring on 07/17/18.

F. STATEMENTS

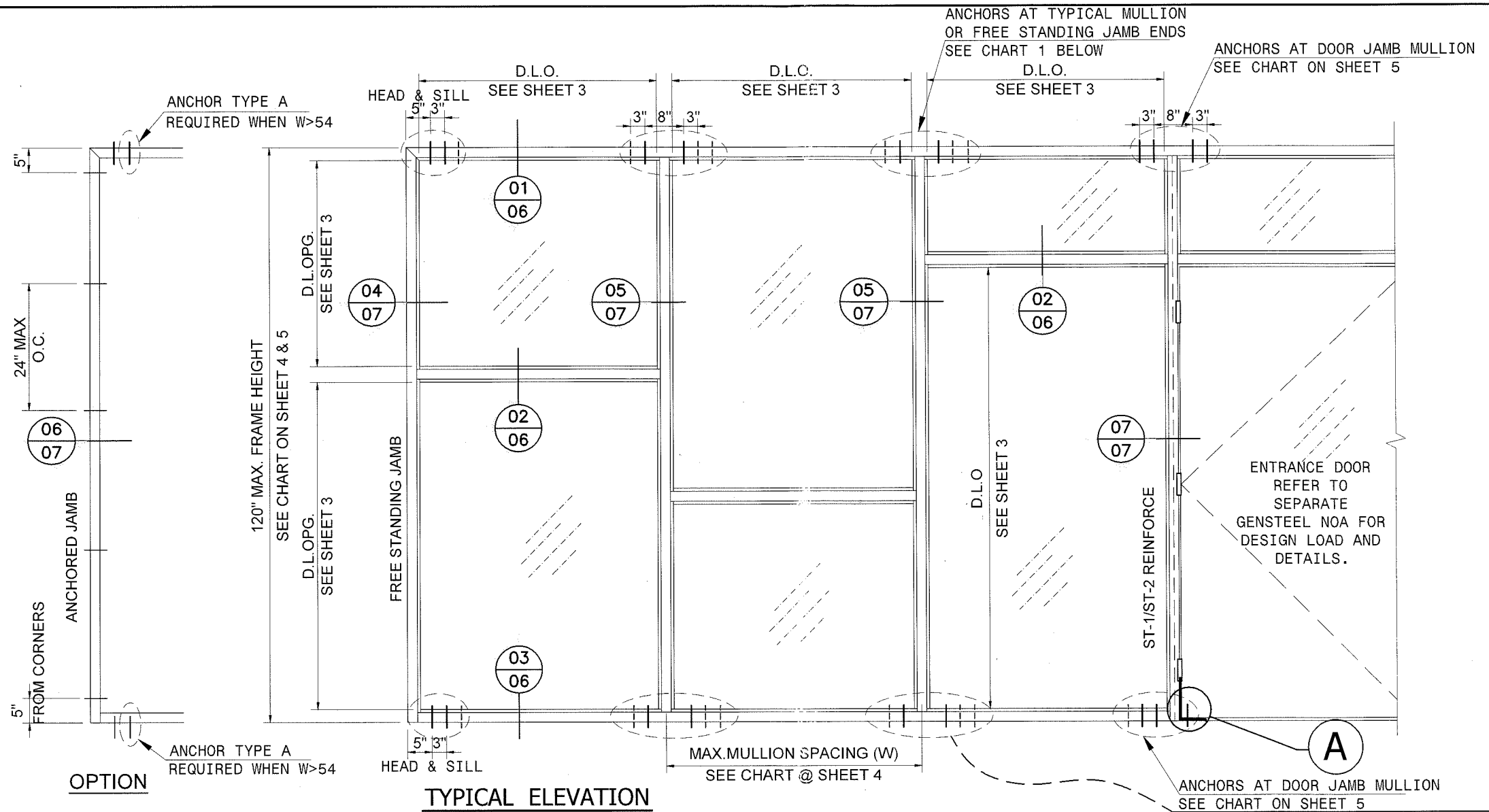
1. Statement letter of conformance, complying with **FBC 5th Edition (2014)**, with **FBC 6th Edition (2017)**, and of no financial interest, dated January 2, 2018, issued by MCY Engineering, Inc., signed and sealed by Yiping Wang, P.E.

G. OTHERS

1. Notice of Acceptance No. **14-0602.07**, issued to Gensteel Doors Inc., for their Series “GenStorm” Steel Storefront System - L.M.I., approved on 10/02/14 and expiring on 10/02/19.


Manuel Perez, P.E.
Product Control Examiner
NOA No. ~~18-0116.15~~

Expiration Date: October 02, 2019
Approval Date: May 03, 2018



GENSTEEL STEEL STORE FRONT SYSTEM

- THIS SYSTEM MAY BE USED IN CONJUNCTION WITH MIAMI-DADE COUNTY APPROVED ENTRANCE DOORS BY 'GENSTEEL DOORS INC.' CODE REQUIREMENTS FOR SAFEGUARDS MUST BE OBSERVED.
- THIS PRODUCT HAS BEEN DESIGNED AND TESTED TO COMPLY WITH THE REQUIREMENTS OF THE 6TH EDITION OF FLORIDA BUILDING CODE 2017 INCLUDING HIGH VELOCITY HURRICANE ZONE (HVHZ).
- ANCHORS SHALL BE AS LISTED, SPACED AS SHOWN ON ELEVATION & DETAILS. ANCHORS EMBEDMENT TO BASE MATERIAL SHALL BE BEYOND WALL DRESSING OR STUCCO.
- ANCHORING OR LOADING CONDITIONS NOT SHOWN IN THESE DETAILS ARE NOT PART OF THIS APPROVAL.
- MATERIALS INCLUDING BUT NOT LIMITED TO STEEL/METAL SCREWS, THAT COME INTO CONTACT WITH OTHER DISSIMILAR MATERIALS SHALL MEET THE REQUIREMENTS OF 6TH EDITION OF FLORIDA BLDG. CODE 2017 SECTION AS APPLICABLE.
- ULTIMATE DESIGN LOAD OBTAINED FROM ASCE 7-10, MULTIPLY BY 0.6 SHALL BE LESS THAN OR EQUAL TO DESIGN LOAD IN THIS DOCUMENT. WOOD BUCKS MUST BE PROPERLY ATTACHED TO SUBSTRATE TO TRANSMIT WIND LOADS TO THE STRUCTURE.

INSTRUCTIONS:

- USE CHARTS AS FOLLOWS
- STEP 1 DETERMINE DESIGN WIND LOAD REQUIREMENTS BASED ON WIND VELOCITY, BLDG. HEIGHT, WIND ZONE USING ASCE 7-10 ALLOWABLE LOAD.
 - STEP 2 CHECK MULLION CAPACITY FOR A GIVEN SPACING AND HEIGHT USING CHARTS ON SHEET 4.
 - STEP 3 USE CHARTS ON SHEETS 3 FOR DESIGN LOAD CAPACITY OF DESIRED GLASS SIZE AND GLASS TYPE.
 - STEP 4 THE LOWEST VALUE RESULTING FROM STEPS 2 AND 3 SHALL APPLY TO ENTIRE SYSTEM.
 - STEP 5 ANCHOR TYPES SEE SHEET 6 FOR DETAILS. NUMBER OF ANCHORS REQUIRED SEE CHART ON SHEET 1 & SHEET 5.

CHART 1 ANCHOR @ END OF MULLION

MULLION TYPE/ANCHOR TYPE	TOTAL NUMBER OF ANCHORS				
	A	A1	B	B1	C
UNREINFORCED MULLION	5	3	3	3	2
REINFORCED MULLION	6	4	4	4	4
FREE-STANDING JAMB					
	3	2	2	2	2

STOREFRONT SYSTEM IS RATED FOR LARGE & SMALL MISSILE IMPACT. SHUTTERS ARE NOT REQUIRED.

PRODUCT REVISED as complying with the Florida Building Code
 Acceptance No 18-0116.15
 Expiration Date 01/2/2019
 By Manuel B...
 Miami Dade Product Control
 MIAMI DADE COUNTY

YIPING WANG, P.E.
 FLORIDA REGISTRATION
 PE #55983
 C.A.N. #2867283
 MAR 29 2018

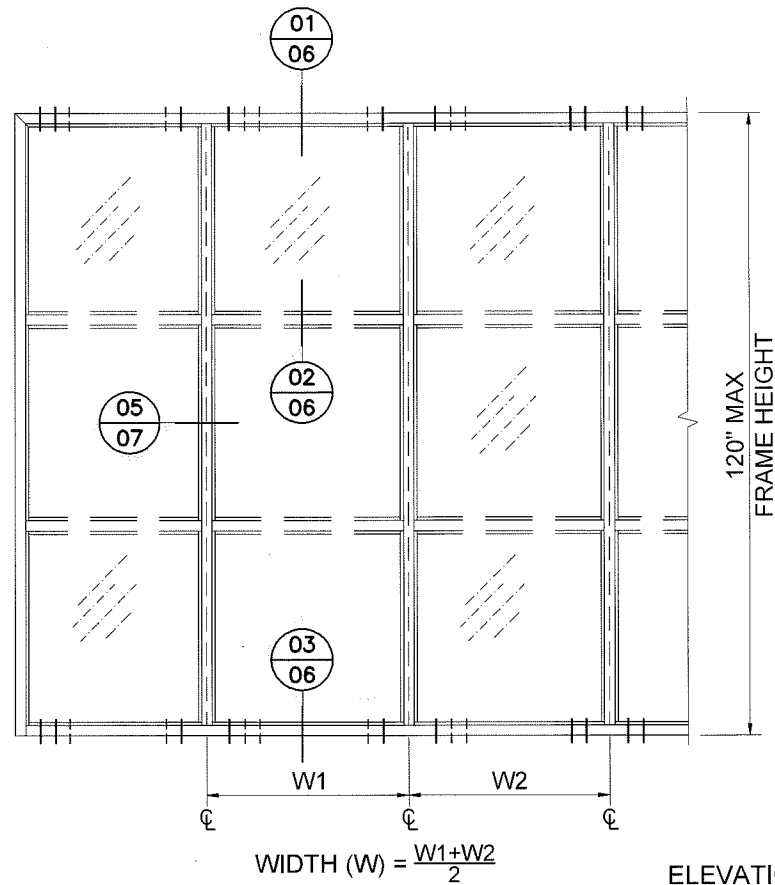
DATE 09/18/2014
 SCALE AS NOTED
 DRAWN T.G.
 PROJECT MCY 14-014
 DRAWING NO. AD14-01
 1 OF 8

REVISIONS

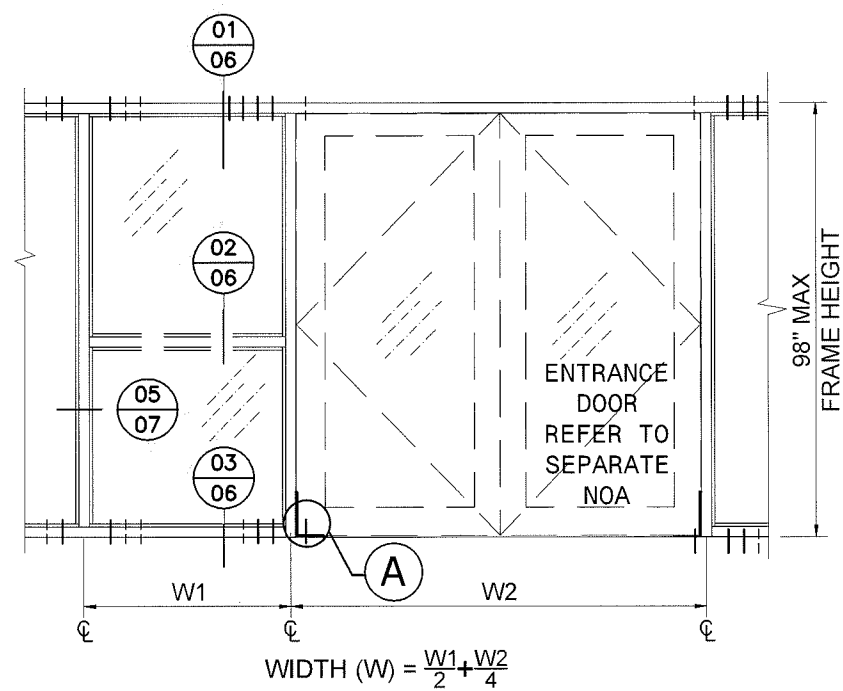
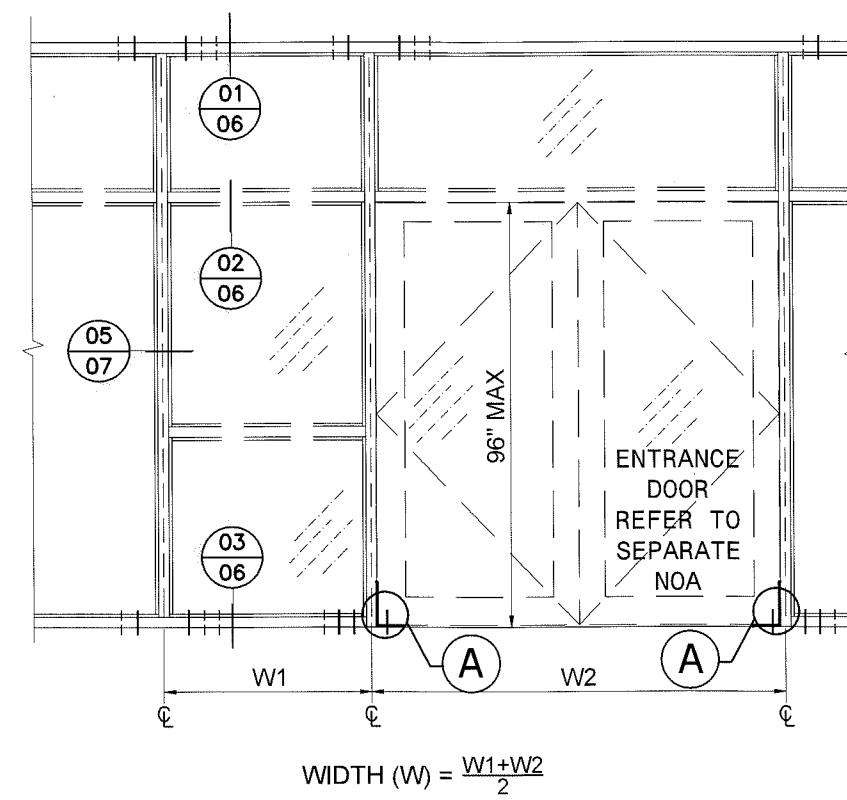
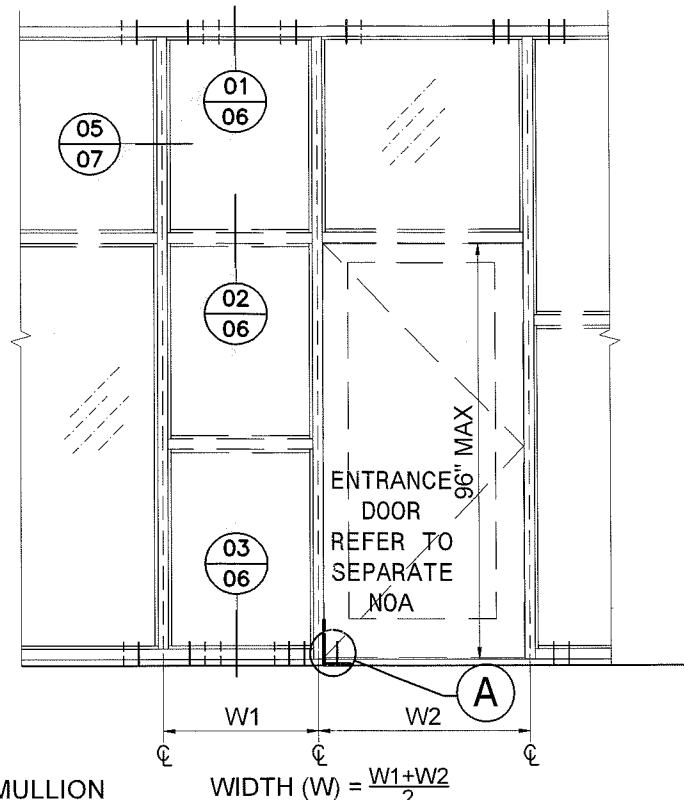
NO.	DATE	DESCRIPTION
1	03/28/18	UPDATE TO 2017 FBC

MCY ENGINEERING, INC.
 GLAZING CONSULTANTS
 8501 SW 124 AVE. STE. 205A P: 305.271.0117
 MIAMI, FL. 33183 F: 786.573.5063
 www.MCYEngineering.com MCY.Engineering@Att.net

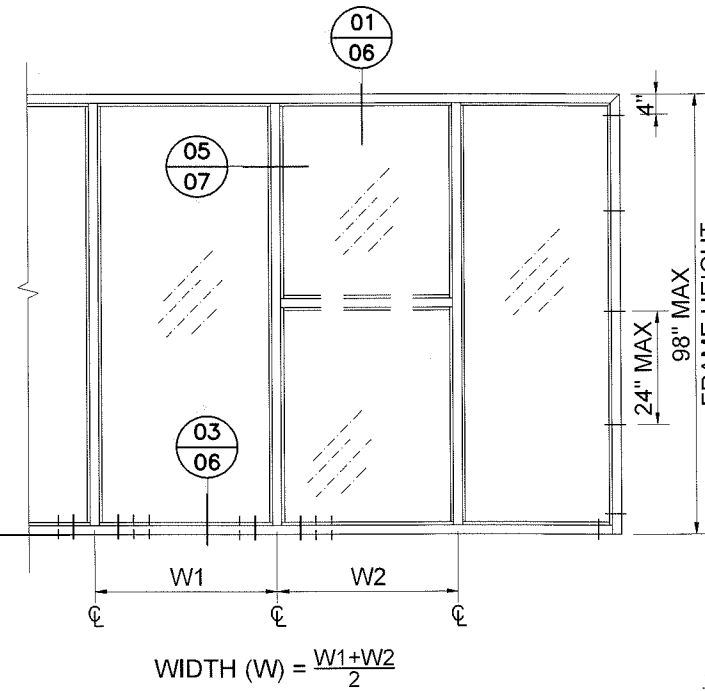
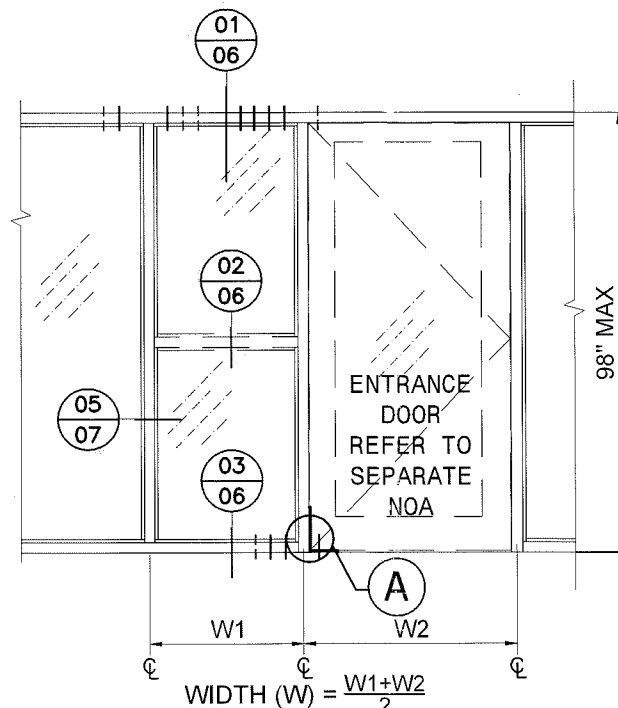
GENSTORM STEEL STOREFRONT SYSTEM - LMI & SMI
Gensteel DOORS
 www.gensteeldoors.com
 4950 Hickmore, St. Laurent, Quebec, Canada, H4T1K6
 Tel: (514) 733-3562 Fax: (514) 733-1932



ELEVATIONS FOR MULLION
(WITH STEEL REINFORCEMENT)



ELEVATIONS FOR MULLION
(WITHOUT STEEL REINFORCEMENT)



PRODUCT REVISED
as complying with the Florida
Building Code
Acceptance No 18-0116.15
Expiration Date Oct. 2, 2019
By *Manuel Perez*
Miami Trade Product Control
MIAMI DADE COUNTY

YIPING WANG, P.E.
FLORIDA REGISTRATION
PE #55983
C.A.N. 28677
No 55983
STATE OF FLORIDA
MAR 29 2018

NO.	DATE	DESCRIPTION
1	03.26.18	UPDATE TO 2017 FBC

MCY ENGINEERING, INC.
GLAZING CONSULTANTS

8501 SW 124 AVE. STE. 205A P: 305.271.0117
MIAMI, FL 33183 F: 786.573.5063
www.MCYEngineering.com MCY.Engineering@Att.net

GENSTORM STEEL STOREFRONT SYSTEM - LMI & SMI

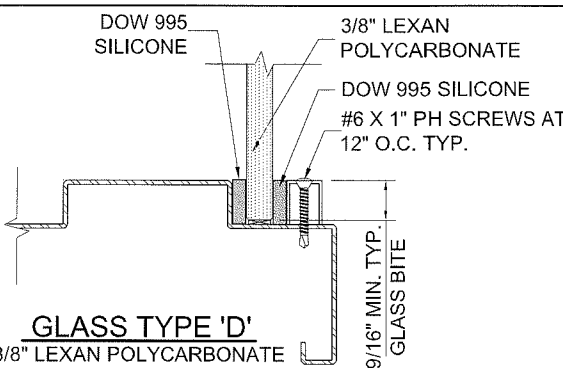
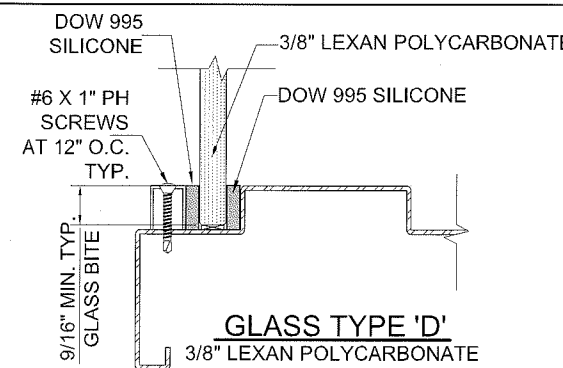
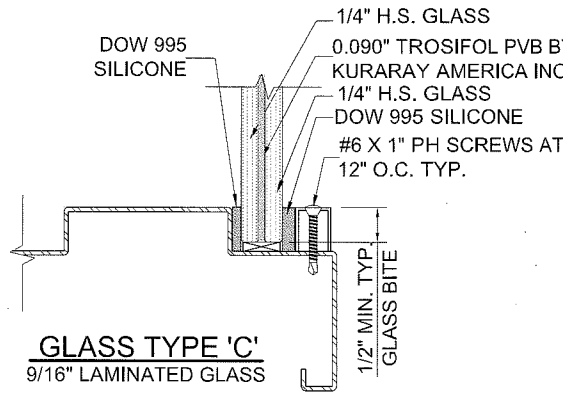
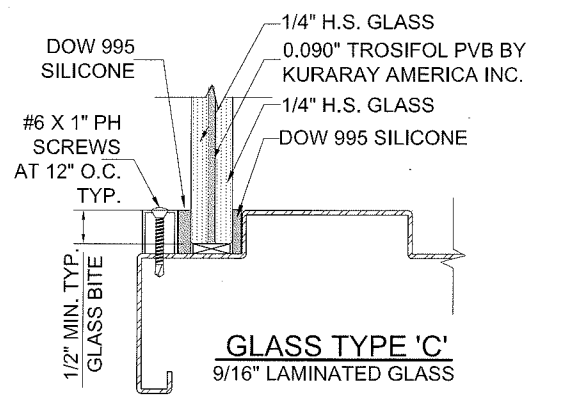
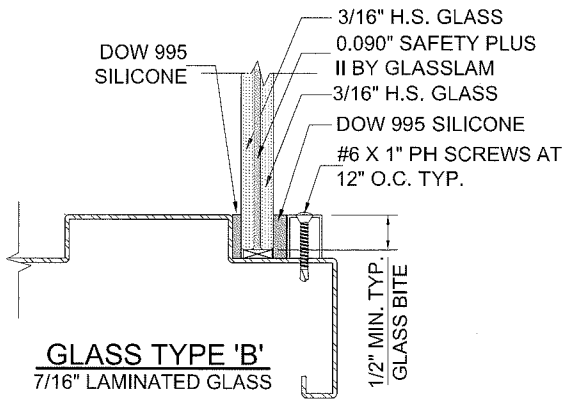
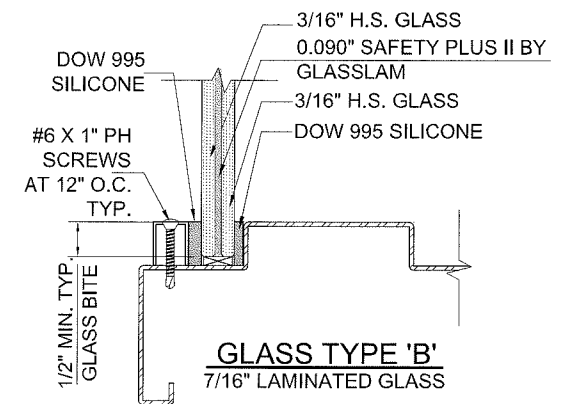
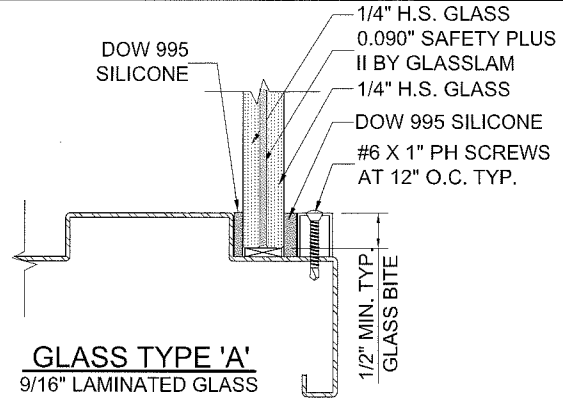
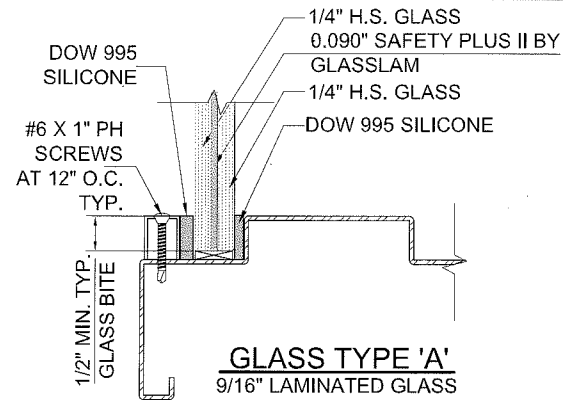
GensteelDOORS
www.gensteeldoors.com
4950 Hickmore, St. Laurent, Quebec, Canada, H4T1K6
Tel: (514) 733-3562 Fax: (514) 733-1932

DATE	09/18/2014
SCALE	AS NOTED
DRAWN	T.G.
PROJECT	MCY 14-014

DRAWING NO.
AD14-01
2 OF 8

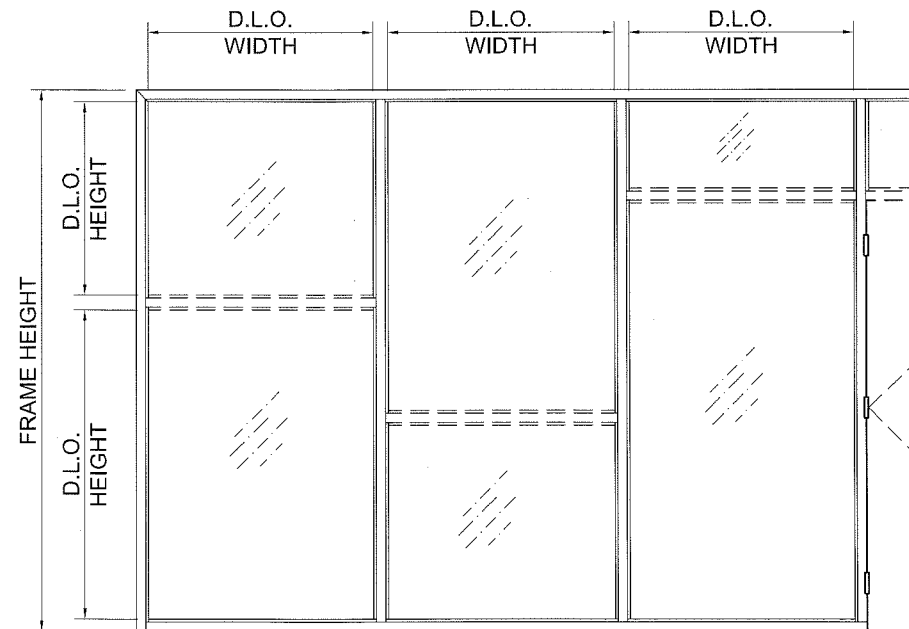
EXTERIOR GLAZED OPTION

INTERIOR GLAZED OPTION



GLASS DESIGN LOAD CAPACITY - PSF					
D.L.O. WIDTH (IN)	D.L.O. HEIGHT (IN)	GLASS AREA (FT ²)	GLASS TYPES		
			"A" EXT.(+)/INT.(-)	"B" EXT.(+)/INT.(-)	"C" EXT.(+)/INT.(-)
39	60	16.25	70	80	70
42		17.5	70	80	70
45		18.75	70	80	-
48		20	70	80	-
51		21.25	70	80	-
54		22.5	70	-	-
36	66	16.5	70	80	70
39		17.875	70	80	70
42		19.25	70	80	70
45		20.625	70	80	-
48		22	70	-	-
51		23.375	70	-	-
30	72	15.00	70	80	70
33		16.50	70	80	70
36		18.00	70	80	70
39		19.50	70	80	-
42		21.00	70	80	-
45		22.50	70	-	-
27	78	14.63	70	80	70
30		16.25	70	80	70
33		17.88	70	80	70
36		19.50	70	80	-
39		21.13	70	80	-
42		22.75	70	-	-

GLASS DESIGN LOAD CAPACITY - PSF					
D.L.O. WIDTH (IN)	D.L.O. HEIGHT (IN)	GLASS AREA (FT ²)	GLASS TYPES		
			"A" EXT.(+)/INT.(-)	"B" EXT.(+)/INT.(-)	"C" EXT.(+)/INT.(-)
30.75	84	17.27	70	80	70
24		14.00	70	80	70
27		15.75	70	80	70
30		17.50	70	80	70
33		19.25	70	80	-
36		21.00	70	80	-
39	90	22.75	70	-	-
21		13.13	70	80	70
24		15.00	70	80	70
27		16.88	70	80	70
30		18.75	70	80	-
33		20.63	70	80	-
36	22.50	70	-	-	
32.75	91.75	20.87	70	80	-
34.875		94.56	22.90	70	-
21	96	14.00	70	80	70
24		16.00	70	80	70
27		18.00	70	80	70
30		20.00	70	80	-
33		22.00	70	-	-



NOTE:
GLASS CAPACITIES ON THIS SHEET ARE BASED ON ASTM E1300 (3 SEC. GUSTS)

VALUES SHOWN ABOVE ARE MAXIMUM DAYLITE OPENING DIMENSIONS. FOR GLASS, CONSULT WITH CHARTS AT SHEET 4 FOR MULLION CAPACITY.

PRODUCT REVISED as complying with the Florida Building Code
Acceptance No. 18-0116.15
Expiration Date Oct. 2, 2019
By Manuel Perez
Miami Dade Product Control

YIPING WANG, P.E.
FLORIDA REGISTRATION # 95585983
C.A.N. 28677

STATE OF FLORIDA
PROFESSIONAL ENGINEER

REVISIONS

NO.	DATE	DESCRIPTION
1	03.29.18	UPDATE TO 2017 PEC

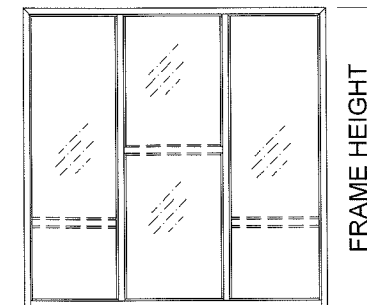
MCY
MCY ENGINEERING, INC.
GLAZING CONSULTANTS
8501 SW 124 AVE. STE. 205A P: 305.271.0117
MIAMI, FL 33183 F: 786.573.5063
www.MCYEngineering.com MCY.Engineering@Att.net

GENSTEEL STEEL STOREFRONT SYSTEM - LMI & SMI
www.gensteeldoors.com
4950 Hickmore, St. Laurent, Quebec, Canada, H4T1K6
Tel: (514) 733-3562 Fax: (514) 733-1932

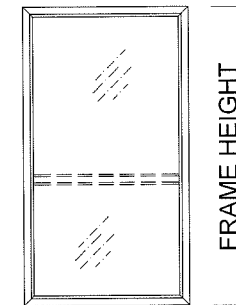
DATE	09/18/2014
SCALE	AS NOTED
DRAWN	T.G.
PROJECT	MCY 14-014
DRAWING NO.	AD14-01
3 OF 8	

MULLION/JAMB LOAD CAPACITY - PSF					
NOMINAL DIMS.		FREE STANDING JAMB	UNREINF. MULLION	REINF. MULLION	
WIDTH (W)	FRAME HEIGHT	EXT.(+) & INT.(-)	EXT.(+) & INT.(-)	EXT.(+) & INT.(-)	
IN	IN	PSF	PSF	PSF	
24	72	70	70	80	
27		70	70	80	
30		70	70	80	
33		70	70	80	
36		70	70	80	
39		70	70	80	
42		70	70	80	
45		70	70	80	
48		70	70	80	
51		70	-	80	
54		70	-	80	
57		70	-	80	
60	70	-	80		
24	78	70	70	80	
27		70	70	80	
30		70	70	80	
33		70	70	80	
36		70	70	80	
39		70	70	80	
42		70	70	80	
45		70	70	80	
48		70	-	80	
51		70	-	80	
54		70	-	80	
24		84	70	70	80
27	70		70	80	
30	70		70	80	
33	70		70	80	
36	70		70	80	
39	70		70	80	
42	70		70	80	
45	70		-	80	
48	70		-	80	
51	70		-	80	
24	90		70	70	80
27			70	70	80
30		70	70	80	
33		70	70	80	
36		70	70	80	
39		70	70	80	
42		70	-	80	
45		70	-	80	
48		70	-	80	

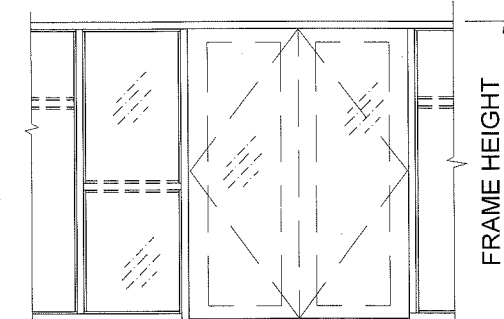
MULLION/JAMB LOAD CAPACITY - PSF					
NOMINAL DIMS.		FREE STANDING JAMB	UNREINF. MULLION	REINF. MULLION	
WIDTH (W)	FRAME HEIGHT	EXT.(+) & INT.(-)	EXT.(+) & INT.(-)	EXT.(+) & INT.(-)	
IN	IN	PSF	PSF	PSF	
24	96	70	70	80	
27		70	70	80	
30		70	70	80	
33		70	70	80	
36		70	70	80	
39		70	-	80	
42		70	-	80	
45		70	-	80	
24		98	70	70	80
27			70	70	80
30			70	70	80
33			70	70	80
36	70		70	80	
39	70		-	80	
42	70		-	80	
24	102		70	-	80
27			70	-	80
30			70	-	80
33			70	-	80
36			70	-	80
39		70	-	80	
42		70	-	80	
24		108	70	-	80
27			70	-	80
30			70	-	80
33			70	-	80
36			70	-	80
39	70		-	80	
24	114		70	-	80
27			70	-	80
30			70	-	80
33			70	-	80
36			70	-	80
24			120	70	-
27		70		-	80
30		70		-	80
33		70		-	80
36		70		-	80



$$\text{WIDTH}(W) = \frac{W1+W2}{2}$$



$$\text{WIDTH}(W) = W1$$



$$\text{WIDTH}(W) = \frac{W1+W2}{2} + \frac{W2}{4}$$

TYPICAL ANCHORS: SEE ELEV. FOR SPACING

- TYPE 'A': 1/4" TAPCON BY 'ITW' (Fu=120 KSI, Fy=192 KSI)
1/4" ULTRACON BY 'ELCO' (Fu=120 KSI, Fy=192 KSI)
INTO 2BY WOOD BUCKS OR WOOD STRUCTURES
1-1/2" MIN. EMBED INTO WOOD
- TYPE 'A1': 1/4" TAPCON BY 'ITW' (Fu=120 KSI, Fy=192 KSI)
1/4" ULTRACON BY 'ELCO' (Fu=120 KSI, Fy=192 KSI)
DIRECTLY INTO CONCRETE OR MASONRY
1-1/4" MIN. EMBEDMENT
- TYPE 'B': 5/16" TAPCON BY 'ITW' (Fu=120 KSI, Fy=192 KSI)
5/16" ULTRACON BY 'ELCO' (Fu=120 KSI, Fy=192 KSI)
INTO 2BY WOOD BUCKS OR WOOD STRUCTURES
1-1/2" MIN. EMBED INTO WOOD
- TYPE 'B1': 5/16" TAPCON BY 'ITW' (Fu=120 KSI, Fy=192 KSI)
5/16" ULTRACON BY 'ELCO' (Fu=120 KSI, Fy=192 KSI)
DIRECTLY INTO CONCRETE (3 KSI MIN) OR MASONRY
1-1/4" MIN. EMBEDMENT

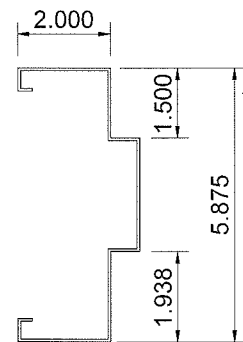
- TYPE 'C': 1/4" SMS OR SELF DRILLING SCREWS (Fu=92 KSI, Fy=120 KSI)
INTO METAL STRUCTURES
STEEL : 1/8" THK. (12 GA.) MIN. (Fy = 36 KSI MIN.)
ALUMINUM : 1/8" THK. MIN. (6063-T5 MIN.)
(STEEL IN CONTACT WITH ALUMINUM TO BE PLATED OR PAINTED)

TYPICAL EDGE DISTANCE

- INTO CONCRETE = 2-1/2" MIN.
- INTO METAL STRUCTURE = 3/4" MIN.
- INTO WOOD STRUCTURE = 1 1/4" MIN.
- C-90 HOLLOW/FILLED BLOCK AT JAMB fm'=2 KSI
CONCRETE AT HEAD, SILL OR JAMB fc'=3 KSI

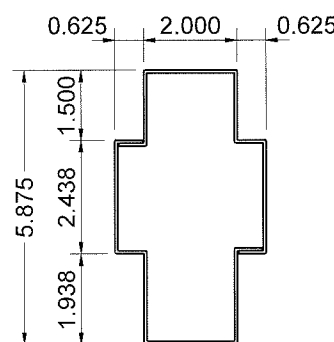
SEALANTS:

ALL FRAME CORNERS AND MULLION SEAMS SEALED WITH SILICONE.



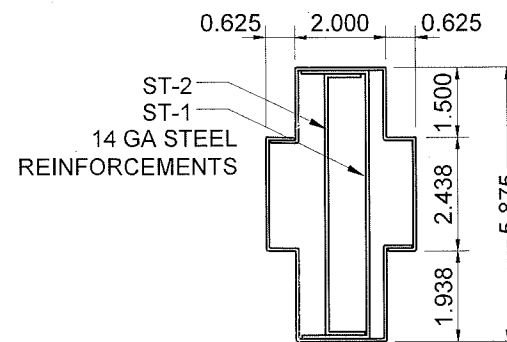
JAMB

Ix = 3.8211 in^4
Sx = 1.2911 in^3



UNREINF. MULLION

Ix = 3.001 in^4
Sx = 1.0636 in^3



REINF. MULLION W/ ST-1 & ST-2

Ix = 7.508 in^4
Sx = 2.5953 in^3

PRODUCT REVISED
as complying with the Florida
Building Code
Acceptance No. 18-0116.15
Expiration Date 02-2-2019
By *Manuel*
Miami Dade Product Control
MIAMI DADE COUNTY

YIPING WANG, P.E.
FLORIDA REGISTRATION
PE #55983
O.A.N. 28677
MAR 2 2018
PROFESSIONAL ENGINEER
FLORIDA

NO.	DATE	DESCRIPTION
1	03.29.18	UPDATE TO 2017 FBC

MCY
MCY ENGINEERING, INC.
 GLAZING CONSULTANTS
 8501 SW 124 AVE. STE. 205A P: 305.271.0117
 MIAMI, FL 33183 F: 786.573.5063
 www.MCYEngineering.com MCY.Engineering@Att.net

GENSTORM STEEL STOREFRONT SYSTEM - LMI & SMI
Gensteel DOORS
 www.gensteeldoors.com
 4950 Hickmore, St. Laurent, Quebec, Canada, H4T1K6
 Tel: (514) 733-3562 Fax: (514) 733-1932

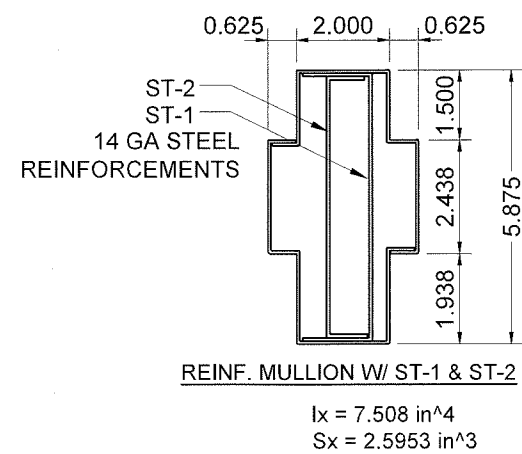
DATE	09/18/2014
SCALE	AS NOTED
DRAWN	T.G.
PROJECT	MCY 14-014

DRAWING NO.
AD14-01
4 OF 8

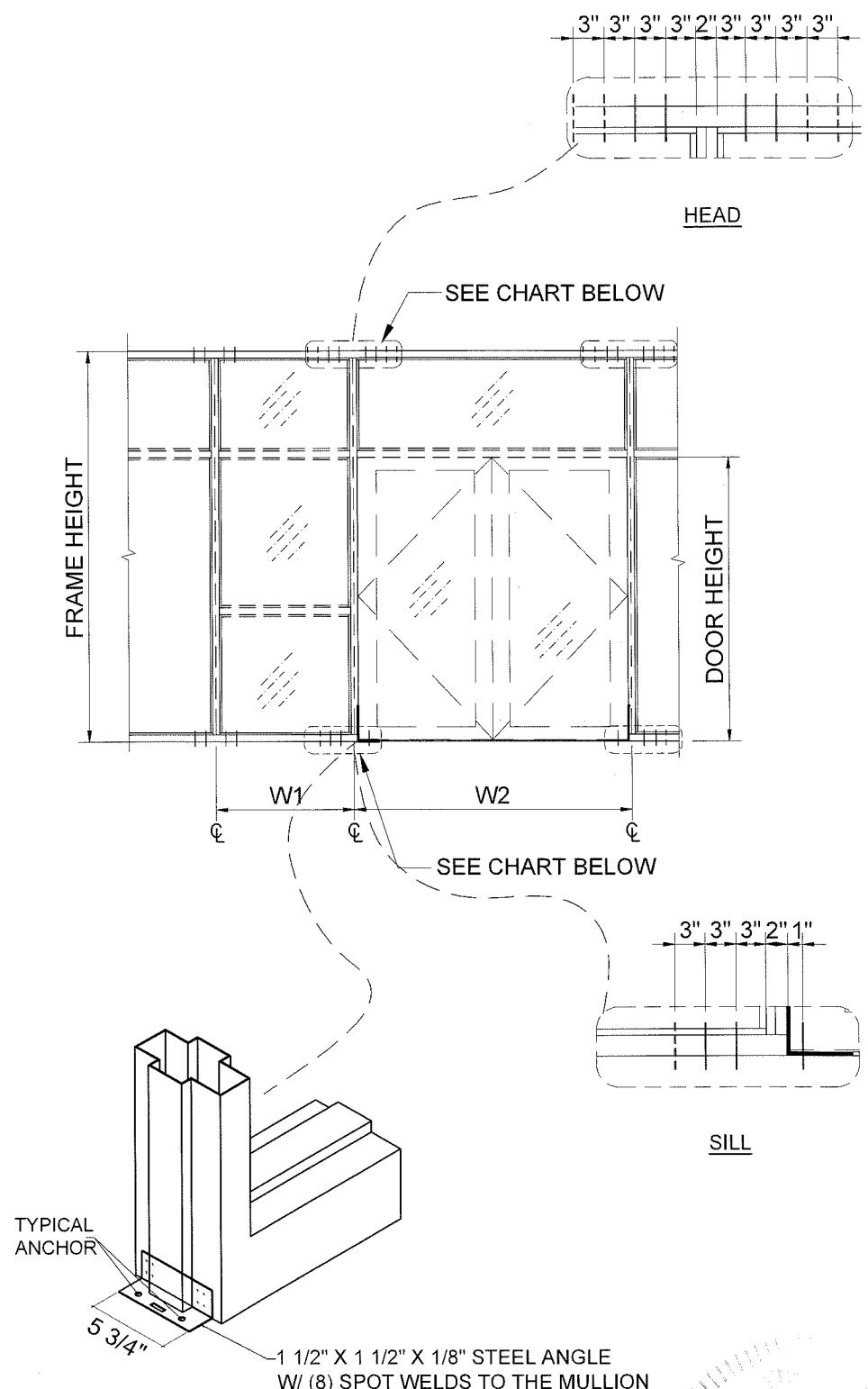
DOOR JAMB MULLION LOAD CAPACITY - PSF					
NOMINAL DIMS.			LOADS -PSF		
FRAME HEIGHT IN	DOOR HEIGHT IN	WIDTH (W2) IN	WIDTH (W1) IN	EXT.(+) INT.(-)	
108	84	72	18	70	
			24	70	
			30	70	
			36	70	
		84	84	18	70
				24	70
	30	70			
	36	70			
	96	96	18	70	
			24	70	
			30	70	
			36	67	
84		72	18	70	
			24	70	
30	70				
36	70				
114	84	84	18	70	
			24	70	
			30	70	
			36	67	
		96	96	18	70
				24	70
	30	66			
	36	62			
	120	84	72	18	70
				24	70
				30	70
				36	70
96		84	18	70	
			24	69	
30	65				
36	61				
120	96	96	18	66	
			24	62	
			30	66	
			36	62	

DOOR JAMB MULLION LOAD CAPACITY - PSF					
NOMINAL DIMS.			LOADS -PSF		
FRAME HEIGHT IN	DOOR HEIGHT IN	WIDTH (W2) IN	WIDTH (W1) IN	EXT.(+) INT.(-)	
108	90	72	18	70	
			24	70	
			30	70	
			36	70	
		84	84	18	70
				24	70
	30	70			
	36	70			
	96	96	18	70	
			24	70	
			30	70	
			36	68	
84		72	18	70	
			24	70	
30	70				
36	70				
114	90	84	18	70	
			24	70	
			30	70	
			36	69	
		96	96	18	70
				24	70
	30	68			
	36	63			
	120	90	72	18	70
				24	70
				30	70
				36	70
84		84	18	70	
			24	70	
30	68				
36	64				
120	96	96	18	70	
			24	66	
			30	66	
			36	66	

DOOR JAMB MULLION LOAD CAPACITY - PSF					
NOMINAL DIMS.			LOADS -PSF		
FRAME HEIGHT IN	DOOR HEIGHT IN	WIDTH (W2) IN	WIDTH (W1) IN	EXT.(+) INT.(-)	
108	96	84	18	70	
			24	70	
			30	70	
			36	70	
		96	96	18	70
				24	70
	30	70			
	36	67			
	114	96	72	18	70
				24	70
				30	70
				36	70
84		84	18	70	
			24	70	
30	70				
36	70				
120	96	84	18	70	
			24	70	
			30	68	
			36	65	
	96	96	18	70	
			24	70	
30	68				
36	65				



ANCHOR TYPES	TOTAL NO. OF ANCHORS AT DOOR JAMB MULLION ENDS	
	HEAD	SILL
A	8	6
A1	6	4
B	6	4
B1	5	4
C	4	-



REVERSE FLOOR ANCHOR AT HINGE STRIKE/MULLION



PRODUCT REVISED as complying with the Florida Building Code
 Acceptance No. 18-0116-15
 Expiration Date Oct 2, 2019
 By *Manuel Perez*
 Miami Dade Product Control

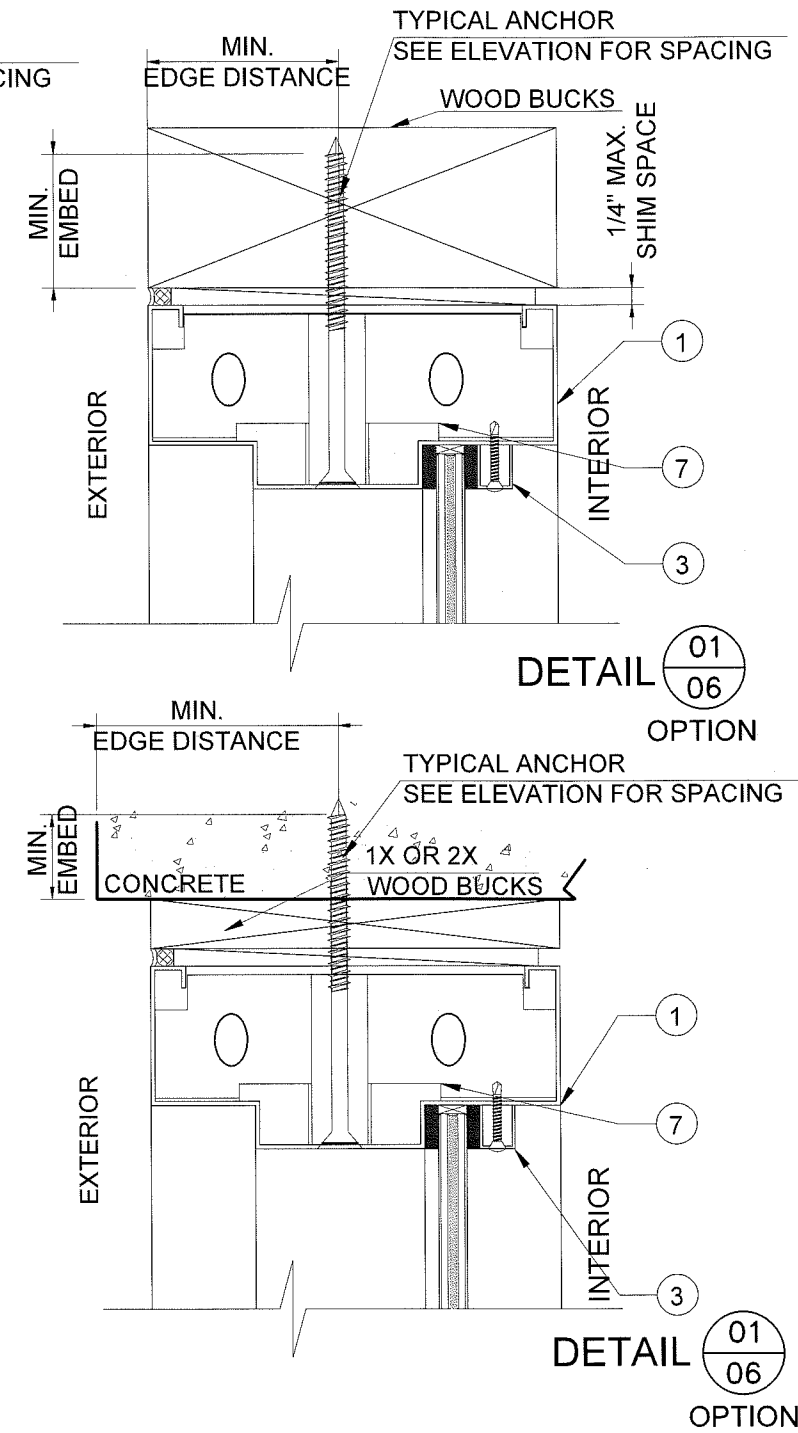
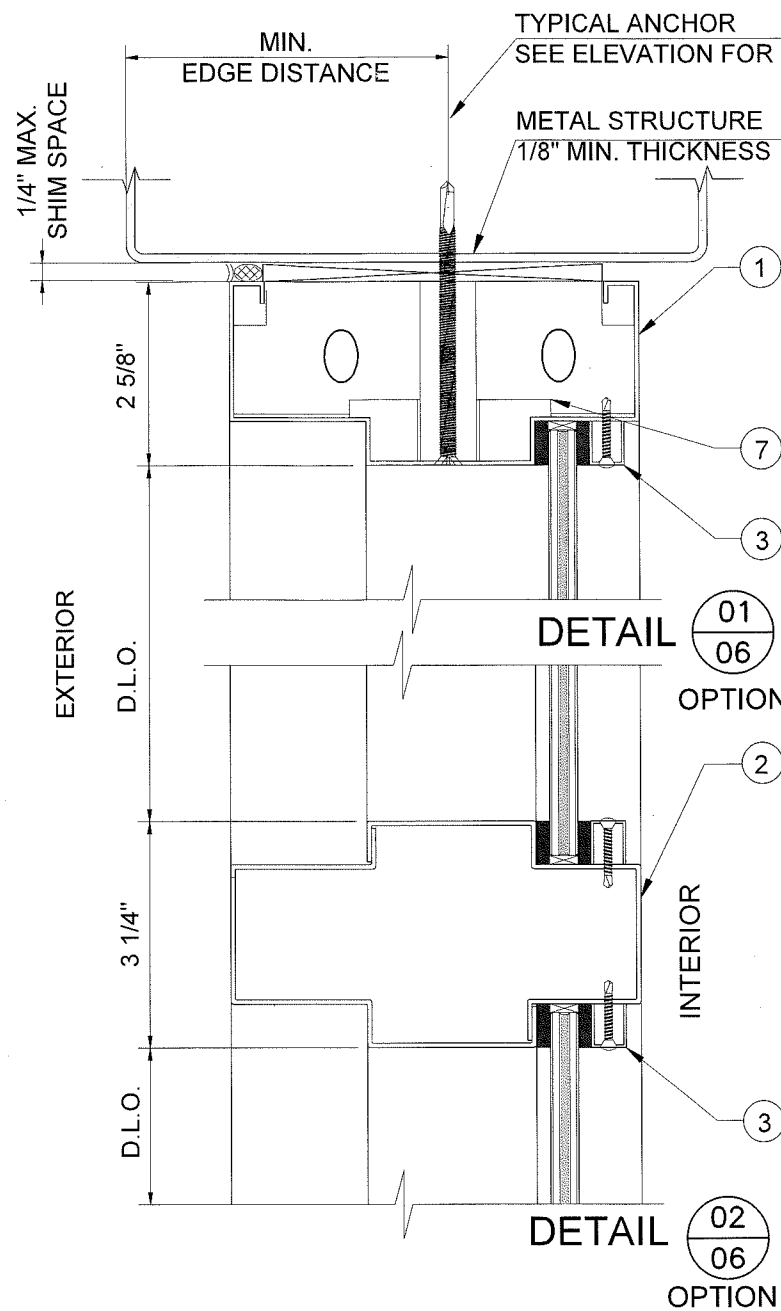
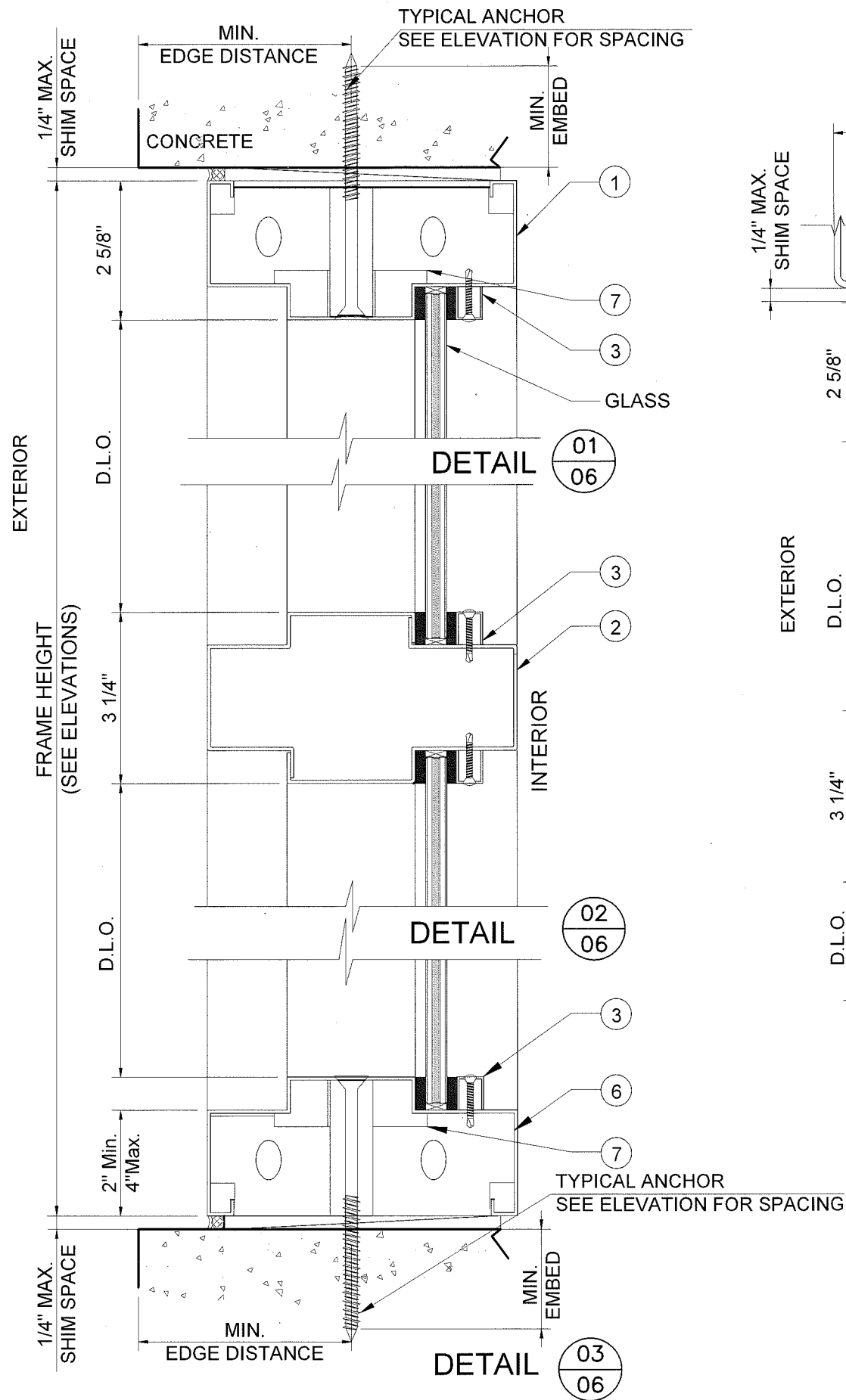
YIPING WANG, P.E.
 FLORIDA REGISTRATION #55983
 C.A.N. 28677-98383
 STATE OF FLORIDA
 PROFESSIONAL ENGINEER

NO.	DATE	DESCRIPTION
1	03.29.16	UPDATE TO 2017, FBC

MCY ENGINEERING, INC.
 GLAZING CONSULTANTS
 8501 SW 124 AVE. STE. 205A P: 305.271.0117
 MIAMI, FL. 33183 F: 786.573.5063
 www.MCYEngineering.com MCY.Engineering@Atl.net

GENSTORM STEEL STOREFRONT SYSTEM - LMI & SMI
Gensteel DOORS
 www.gensteeldoors.com
 4950 Hickmore, St. Laurent, Quebec, Canada, H4T1K6
 Tel: (514) 733-3562 Fax: (514) 733-1932

DATE	09/18/2014
SCALE	AS NOTED
DRAWN	T.G.
PROJECT	MCY 14-014
DRAWING NO.	AD14-01
5 OF 8	



NOTE:
 INSIDE GLAZING OPTION SHOWN.
 EXTERIOR GLAZING IS AN OPTION,
 FOR DETAIL SEE SHEET 3.

PRODUCT REVISED
 as complying with the Florida
 Building Code
 Acceptance No 18-0116.15
 Expiration Date 03.2.2019
 By *Manuel Lopez*
 Miami Dade Product Control
 MIAMI DADE COUNTY

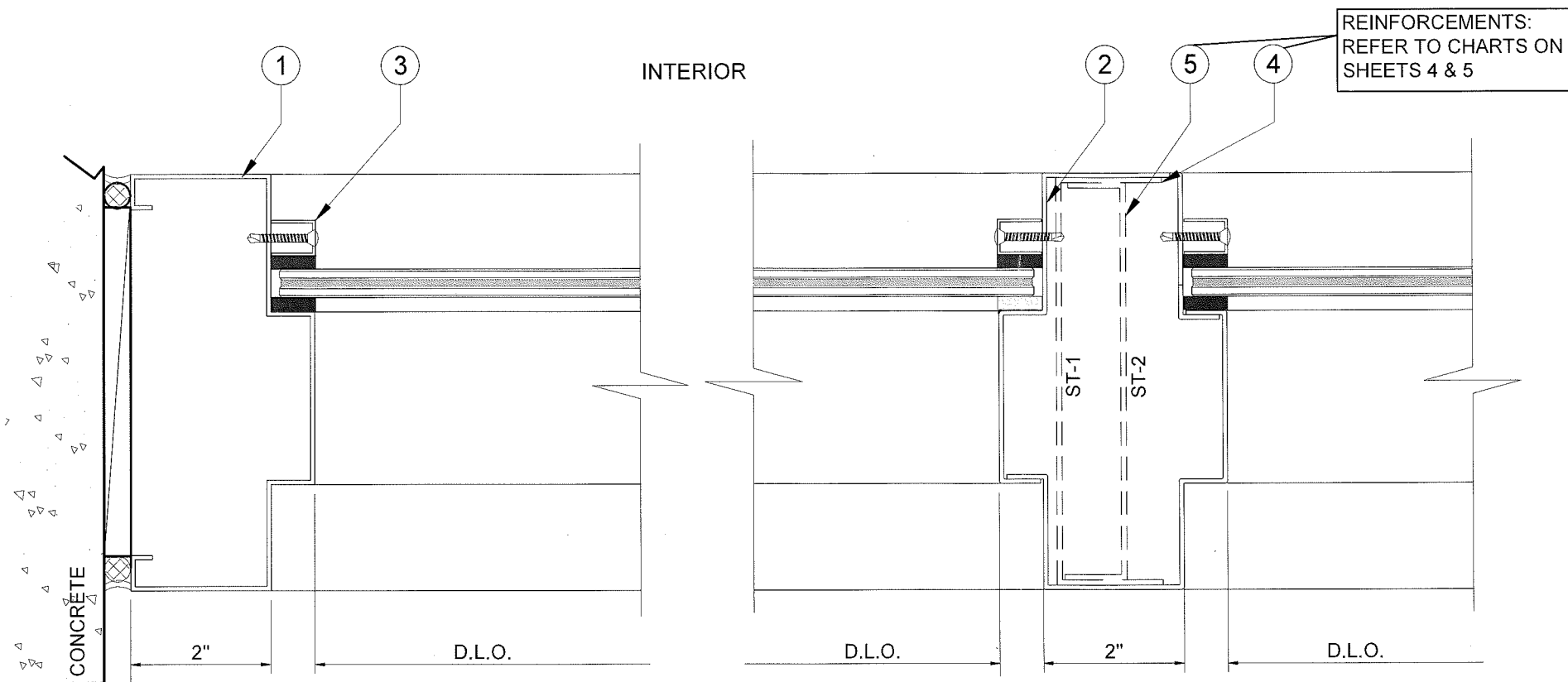
YIPING WANG, P.E.
 FLORIDA REGISTRATION
 PE #55983
 C.A.N. 28677
 No 55983
 STATE OF FLORIDA
 PROFESSIONAL ENGINEER
 MAR 29 2018

NO.	DATE	DESCRIPTION
1	03.29.18	UPDATE TO 2017 PEC

MCY
MCY ENGINEERING, INC.
 GLAZING CONSULTANTS
 8501 SW 124 AVE. STE. 205A P: 305.271.0117
 MIAMI, FL. 33183 F: 786.573.5063
 www.MCYEngineering.com MCY.Engineering@Att.net

GENSTORM STEEL STOREFRONT SYSTEM - LMI & SIMI
GensteelDOORS
 www.gensteeldoors.com
 4950 Hickmore, St. Laurent, Quebec, Canada, H4T1K6
 Tel: (514) 733-3562 Fax: (514) 733-1932

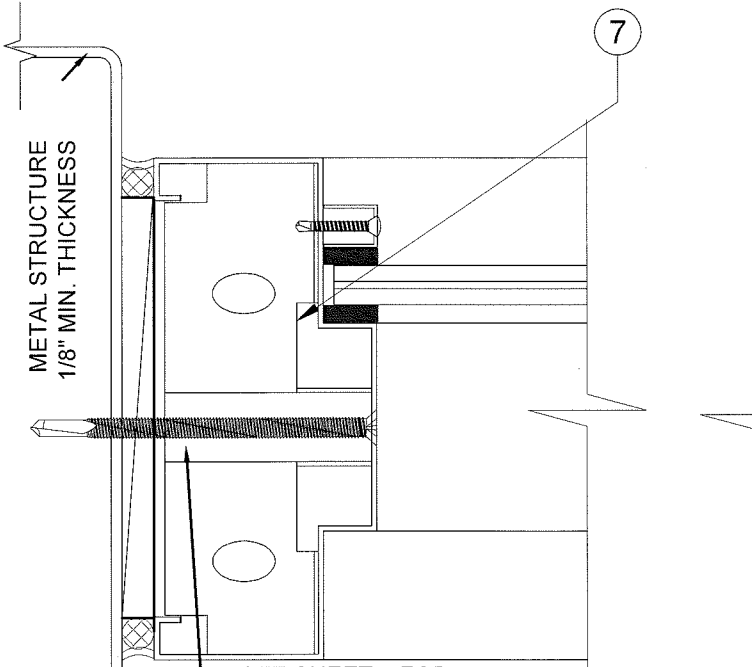
DATE	09/18/2014
SCALE	AS NOTED
DRAWN	T.G.
PROJECT	MCY 14-014
DRAWING NO.	AD14-01
6 OF 8	



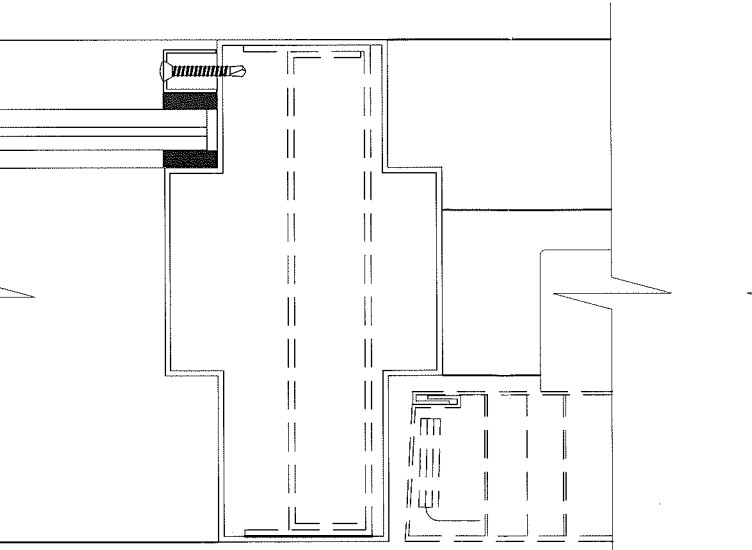
	GAP	
MAX.F.H.	MIN.	MAX.
78"	1/4"	1/2"
120"	3/8"	1/2"

1/4" MAX. SHIM SPACING
 DETAIL 04/07

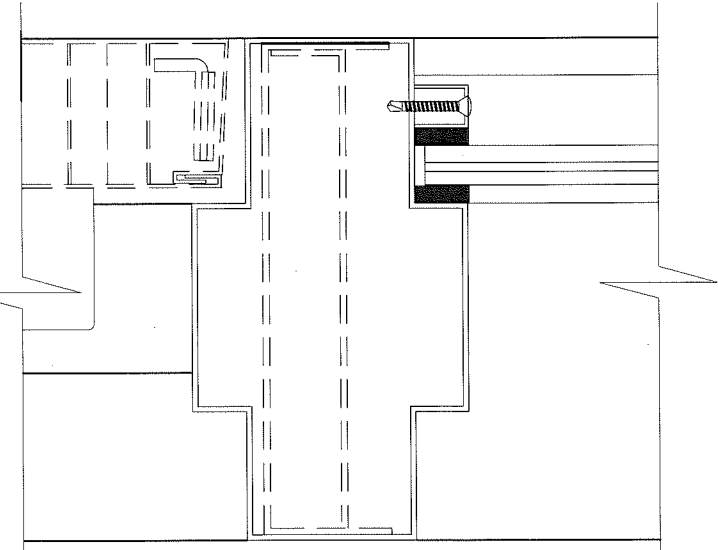
DETAIL 05/07



SEE SHEET 4 FOR TYPICAL ANCHOR. SEE ELEVATION FOR SPACING.
 1/4" MAX. SHIM SPACING
 DETAIL 06/07



DETAIL 07/07 DOOR JAMB MULLION W/ OUTSWING DOOR OPTION



DETAIL 07/07 DOOR JAMB MULLION W/ INSWING DOOR OPTION

PRODUCT REVISED
 to comply with the Florida Building Code
 Acceptance No. 18-0116.15
 Expiration Date 01-2-2019
 By *Manuel Perez*
 Miami Dade Product Control
 MIAMI DADE COUNTY

YIPING WANG, P.E.
 FLORIDA REGISTRATION
 PE #55983
 C.A.N. 28677
 No 55983
 STATE OF FLORIDA
 PROFESSIONAL ENGINEER

NO.	DATE	DESCRIPTION
1	03.29.18	UPDATE TO 2017 PEC

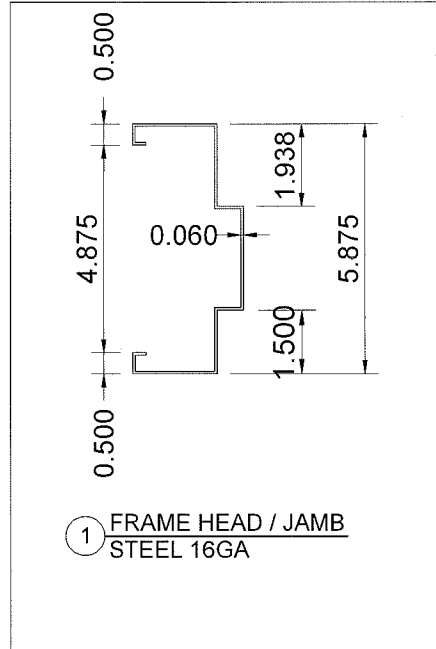
MCY
MCY ENGINEERING, INC.
 GLAZING CONSULTANTS
 8501 SW 124 AVE. STE. 205A P: 305.271.0117
 MIAMI, FL 33183 F: 786.573.5063
 www.MCYEngineering.com MCY.Engineering@Att.net

GENSTORM STEEL STOREFRONT SYSTEM - LMI & SMI
Gensteel DOORS
 www.gensteeldoors.com
 4950 Hickmore, St. Laurent, Quebec, Canada, H4T1K6
 Tel: (514) 733-3562 Fax: (514) 733-1932

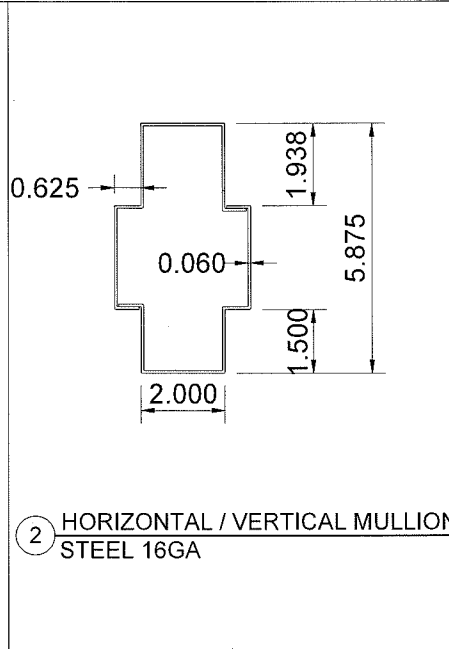
DATE	09/18/2014
SCALE	AS NOTED
DRAWN	T.G.
PROJECT	MCY 14-014

DRAWING NO.
 AD14-01
 7 OF 8

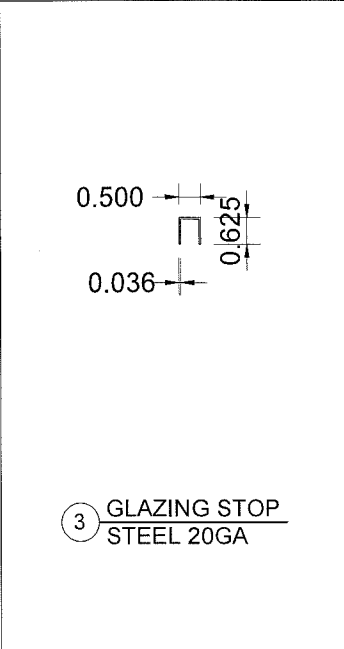
MAR 29 2018



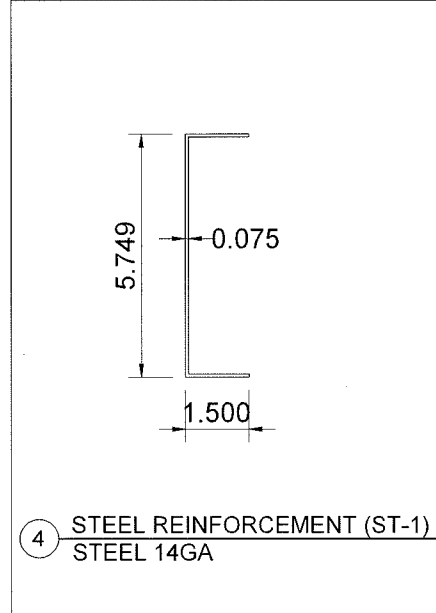
1 FRAME HEAD / JAMB
STEEL 16GA



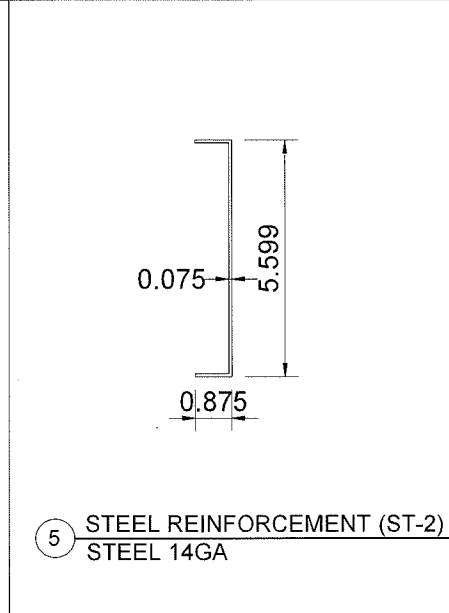
2 HORIZONTAL / VERTICAL MULLION
STEEL 16GA



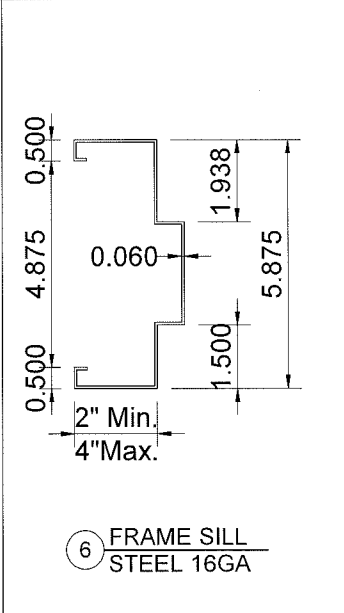
3 GLAZING STOP
STEEL 20GA



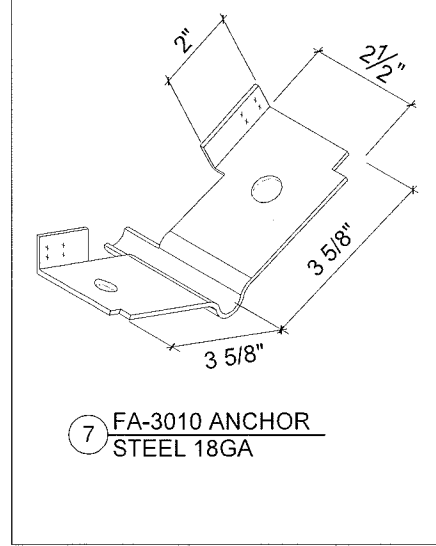
4 STEEL REINFORCEMENT (ST-1)
STEEL 14GA



5 STEEL REINFORCEMENT (ST-2)
STEEL 14GA

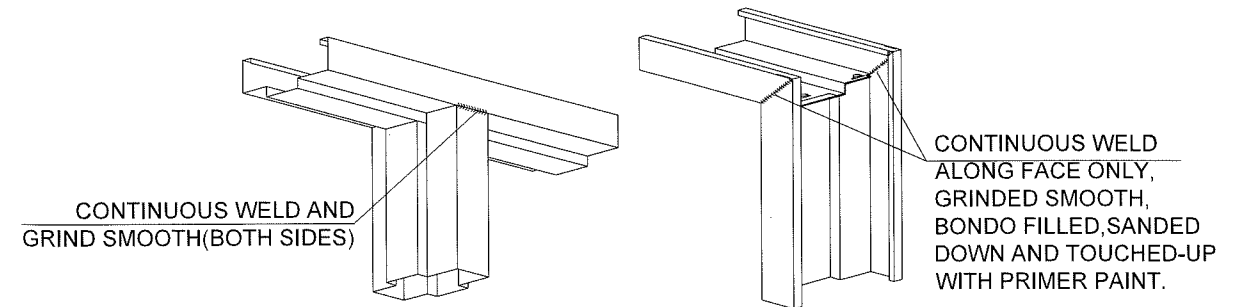


6 FRAME SILL
STEEL 16GA

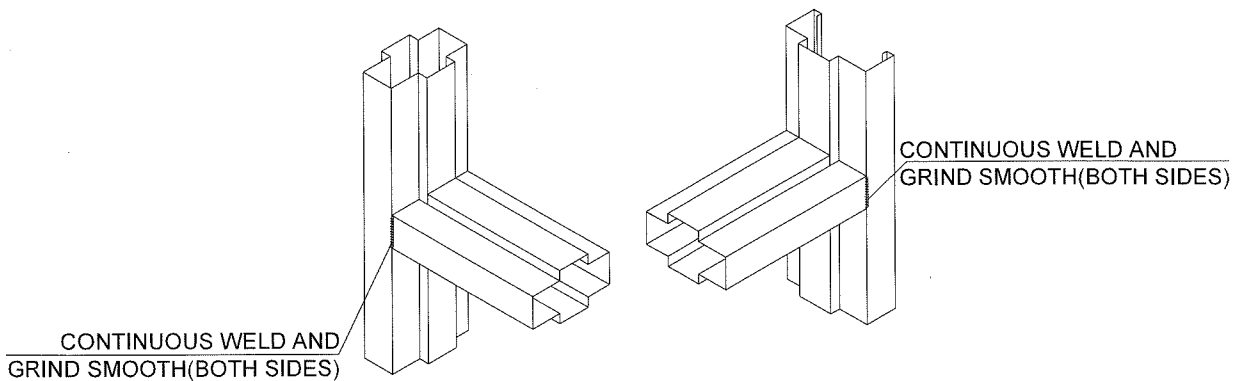


7 FA-3010 ANCHOR
STEEL 18GA

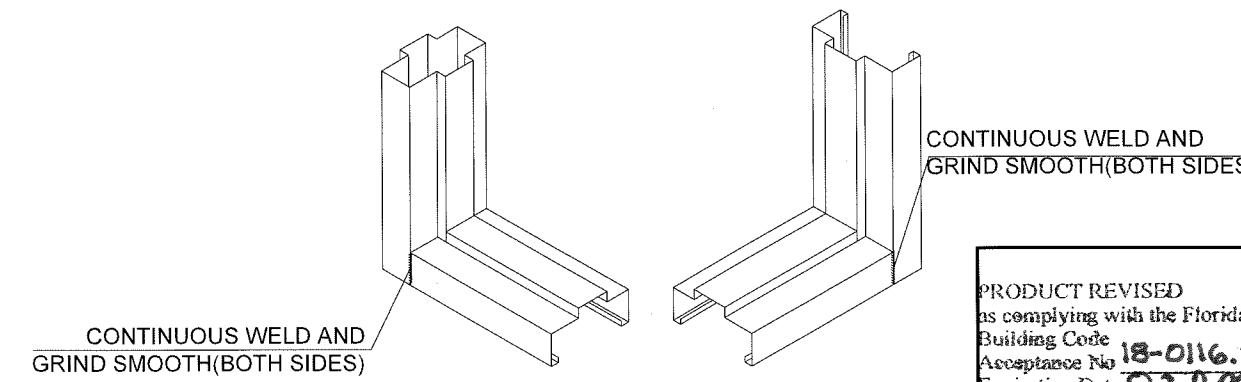
ITEM NO.	QUANTITY	DESCRIPTION	MATERIAL	MIN. YIELD STRESS	MANF. / SUPPLIER / REMARKS
1	AS REQD.	FRAME HEAD / JAMB	GALVANNEAL STEEL	40.8 KSI	GENSTEEL / ASTM A653 16 GA. COLD FORMED
2	AS REQD.	HORIZONTAL/VERTICAL MULLION	GALVANNEAL STEEL	40.8 KSI	GENSTEEL / ASTM A653 16 GA. COLD FORMED
3	AS REQD.	GLAZING STOP	GALVANNEAL STEEL	40.8 KSI	GENSTEEL / ASTM A653 20 GA. COLD FORMED
4	AS REQD.	ST-1 REINFORCEMENT	GALVANNEAL STEEL	40.8 KSI	GENSTEEL / ASTM A653 14 GA. COLD FORMED
5	AS REQD.	ST-2 REINFORCEMENT	GALVANNEAL STEEL	40.8 KSI	GENSTEEL / ASTM A653 14 GA. COLD FORMED
6	AS REQD.	FRAME SILL	GALVANNEAL STEEL	40.8 KSI	GENSTEEL / ASTM A653 16 GA. COLD FORMED
7	AS REQD.	FA-3010 ANCHOR	GALVANNEAL STEEL	40.8 KSI	GENSTEEL / ASTM A653 18 GA. COLD FORMED



TOP FRAME CORNER CONNECTION DETAIL



HORIZONTAL TO MULLION CONNECTION DETAIL



BOTTOM FRAME CORNER CONNECTION DETAIL

CONTINUOUS WELD AND GRIND SMOOTH(BOTH SIDES)

CONTINUOUS WELD ALONG FACE ONLY, GRINDED SMOOTH, BONDO FILLED, SANDED DOWN AND TOUCHED-UP WITH PRIMER PAINT.

CONTINUOUS WELD AND GRIND SMOOTH(BOTH SIDES)

CONTINUOUS WELD AND GRIND SMOOTH(BOTH SIDES)

CONTINUOUS WELD AND GRIND SMOOTH(BOTH SIDES)

PRODUCT REVISED as complying with the Florida Building Code
Acceptance No. 18-0116.15
Expiration Date 02.2.2019
By *Manuel Perez*
Miami Dade Product Control
MIAMI DADE COUNTY

YIPING WANG, P.E.
FLORIDA REGISTRATION
PE #55983
C.A.N. 128677
No 55983
STATE OF FLORIDA
ENGINEER
MAR 29 2013

NO.	DATE	DESCRIPTION
1	03.29.18	UPDATE TO 2017 FEC

MCY
MCY ENGINEERING, INC.
GLAZING CONSULTANTS
8501 SW 124 AVE. STE. 205A P: 305.271.0117
MIAMI, FL 33183 F: 786.573.5063
www.MCYEngineering.com MCY.Engineering@Att.net

GENSTORM STEEL STOREFRONT SYSTEM - LMI & SMI
www.gensteeldoors.com
4950 Hickmore, St. Laurent, Quebec, Canada, H4T1K6
Tel: (514) 733-3562 Fax: (514) 733-1932

DATE	09/18/2014
SCALE	AS NOTED
DRAWN	T.G.
PROJECT	MCY 14-014
DRAWING NO.	AD14-01
8 OF 8	